

Product datasheet for **TA324896S**

PKC nu (PRKD3) Rabbit Polyclonal Antibody

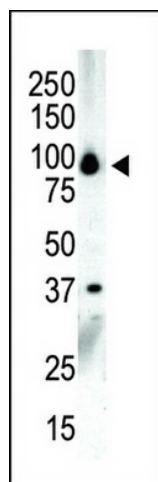
Product data:

Product Type:	Primary Antibodies
Applications:	IHC, WB
Recommended Dilution:	WB: 1:1000, IHC: 1:50~100
Reactivity:	Human (Predicted: Mouse)
Host:	Rabbit
Isotype:	IgG
Clonality:	Polyclonal
Immunogen:	This PKC nu antibody is generated from rabbits immunized with a KLH conjugated synthetic peptide between 860-890 amino acids from the C-terminal region of human PKC nu.
Formulation:	Purified polyclonal antibody supplied in PBS with 0.09% (W/V) sodium azide.
Concentration:	lot specific
Purification:	This antibody is prepared by Saturated Ammonium Sulfate (SAS) precipitation followed by dialysis against PBS.
Conjugation:	Unconjugated
Storage:	Store at -20°C as received.
Stability:	Stable for 12 months from date of receipt.
Predicted Protein Size:	100471 Da
Gene Name:	protein kinase D3
Database Link:	NP_005804 Entrez Gene 75292 Mouse Entrez Gene 23683 Human O94806
Synonyms:	EPK2; nPKC-NU; PKC-NU; PKD3; PRKCN
Protein Families:	Druggable Genome, Protein Kinase

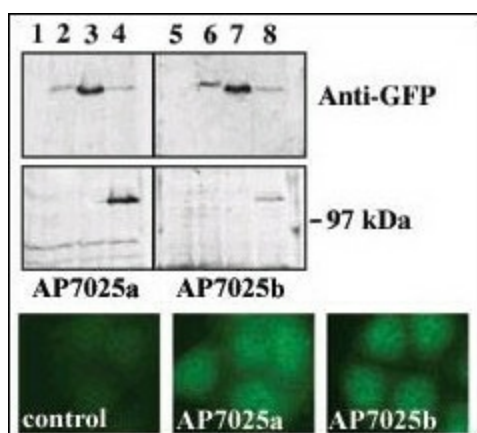


[View online »](#)

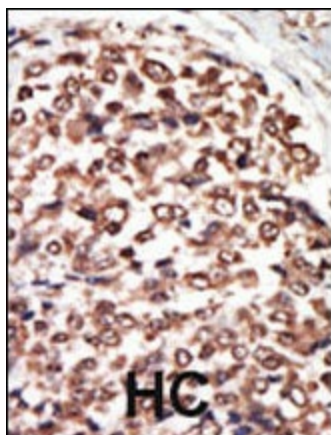
Product images:



Western blot analysis of anti-PKCnu C-term Pab (Cat. #TA324896) in NCI-H460 cell lysate. PKCnu (arrow) was detected using purified Pab. Secondary HRP-anti-rabbit was used for signal visualization with chemiluminescence.



Upper panel, WB of GFP fusion protein expression in Panc-1 cells by using an anti-GFP antibody. Lanes 1 and 5: non-transfected cells; lanes 2 and 6: GFP-PKD-transfected cells; lanes 3 and 7: GFP-PKD2-transfected cells; lanes 4 and 8: GFP-PKD3 transfected cells. Center panel, WB of GFP fusion protein expression in Panc-1 cells by using PKD3 N-term (AP7025a) and C-term ([TA324896]) antibodies. Lower panel, IF of GFP-PKD3 protein expression in Panc-1 cells by using AP7025a and [TA324896] antibodies.



Formalin-fixed and paraffin-embedded human cancer tissue reacted with the primary antibody, which was peroxidase-conjugated to the secondary antibody, followed by AEC staining. This data demonstrates the use of this antibody for immunohistochemistry; clinical relevance has not been evaluated. BC = breast carcinoma; HC = hepatocarcinoma.