

Product datasheet for **TA324893**

PKC delta (PRKCD) Rabbit Polyclonal Antibody

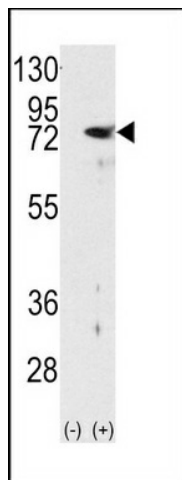
Product data:

Product Type:	Primary Antibodies
Applications:	IHC, WB
Recommended Dilution:	WB: 1:1000, IHC: 1:50~100
Reactivity:	Human
Host:	Rabbit
Isotype:	IgG
Clonality:	Polyclonal
Immunogen:	This PKC delta antibody is generated from rabbits immunized with a KLH conjugated synthetic peptide between 298-326 amino acids from the N-terminal region of human PKC delta.
Formulation:	Purified polyclonal antibody supplied in PBS with 0.09% (W/V) sodium azide.
Concentration:	lot specific
Purification:	This antibody is prepared by Saturated Ammonium Sulfate (SAS) precipitation followed by dialysis against PBS.
Conjugation:	Unconjugated
Storage:	Store at -20°C as received.
Stability:	Stable for 12 months from date of receipt.
Predicted Protein Size:	77505 Da
Gene Name:	protein kinase C delta
Database Link:	NP_006245 Entrez Gene 5580 Human Q05655
Synonyms:	ALPS3; CVID9; MAY1; nPKC-delta; PKCD
Protein Families:	Druggable Genome, Protein Kinase
Protein Pathways:	Chemokine signaling pathway, Fc epsilon RI signaling pathway, Fc gamma R-mediated phagocytosis, GnRH signaling pathway, Neurotrophin signaling pathway, Tight junction, Type II diabetes mellitus, Vascular smooth muscle contraction

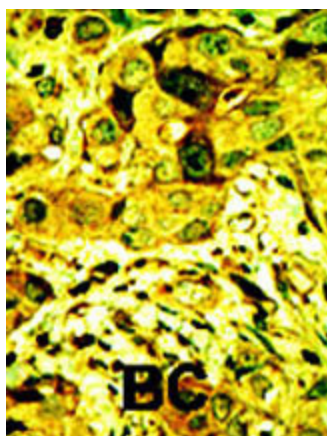


[View online »](#)

Product images:



Western blot analysis of PKC delta (arrow) using rabbit polyclonal PKC delta Antibody (N-term) (Cat. #TA324893). 293 cell lysates (2 ug/lane) either nontransfected (Lane 1) or transiently transfected with the PRKCD gene (Lane 2) (Origene Technologies).



Formalin-fixed and paraffin-embedded human cancer tissue reacted with the primary antibody, which was peroxidase-conjugated to the secondary antibody, followed by AEC staining. This data demonstrates the use of this antibody for immunohistochemistry; clinical relevance has not been evaluated. BC = breast carcinoma; HC = hepatocarcinoma.