

Product datasheet for **TA324892S**

Sumo 2 (SUMO2) Mouse Monoclonal Antibody [Clone ID: 973CT8.1.1]

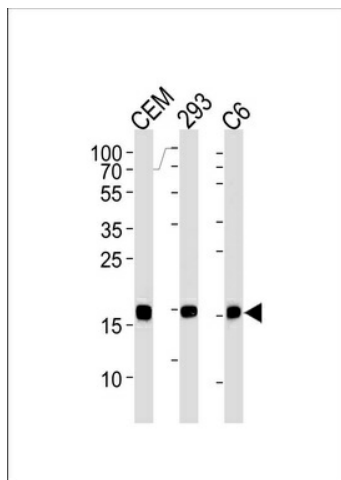
Product data:

Product Type:	Primary Antibodies
Clone Name:	973CT8.1.1
Applications:	WB
Recommended Dilution:	WB: 1:1000
Reactivity:	Human, Rat (Predicted: Mouse, Bovine, Chicken, Hamster, Pig, Monkey)
Host:	Mouse
Isotype:	IgG2b
Clonality:	Monoclonal
Immunogen:	Purified His-tagged SUMO2 protein was used to produced this monoclonal antibody.
Formulation:	Purified monoclonal antibody supplied in PBS with 0.09% (W/V) sodium azide.
Concentration:	lot specific
Purification:	This antibody is purified through a protein G column, followed by dialysis against PBS.
Conjugation:	Unconjugated
Storage:	Store at -20°C as received.
Stability:	Stable for 12 months from date of receipt.
Predicted Protein Size:	10871 Da
Gene Name:	small ubiquitin-like modifier 2
Database Link:	NP_001005849 Entrez Gene 170930 Mouse Entrez Gene 690244 Rat Entrez Gene 705512 Monkey Entrez Gene 6613 Human P61956
Synonyms:	HSMT3; Smt3A; SMT3B; SMT3H2; SUMO3
Protein Families:	Druggable Genome



[View online »](#)

Product images:



SUMO2 Antibody (C-term) (Cat. #[TA324892]) western blot analysis in CEM, 293, rat C6 cell line lysates (35ug/lane). This demonstrates the SUMO2 antibody detected the SUMO2 protein (arrow).