

Product datasheet for **TA324890**

Aurora C (AURKC) Rabbit Polyclonal Antibody

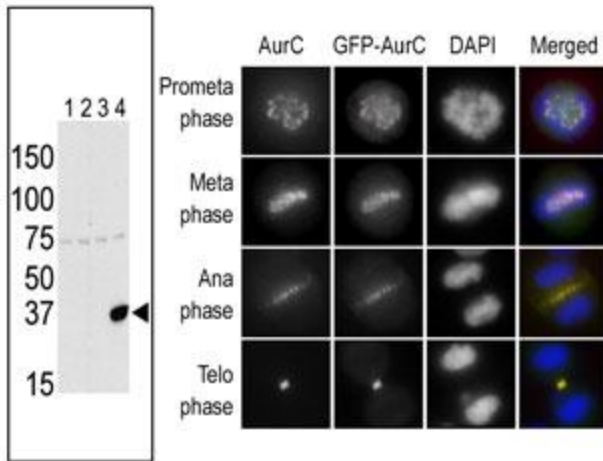
Product data:

Product Type:	Primary Antibodies
Applications:	WB
Recommended Dilution:	WB: 1:1000
Reactivity:	Human
Host:	Rabbit
Isotype:	IgG
Clonality:	Polyclonal
Immunogen:	This Aurora-C antibody is generated from rabbits immunized with a KLH conjugated synthetic peptide between 1-30 amino acids from the N-terminal region of human Aurora-C.
Formulation:	Purified polyclonal antibody supplied in PBS with 0.09% (W/V) sodium azide.
Concentration:	lot specific
Purification:	This antibody is purified through a protein A column, followed by peptide affinity purification.
Conjugation:	Unconjugated
Storage:	Store at -20°C as received.
Stability:	Stable for 12 months from date of receipt.
Predicted Protein Size:	35591 Da
Gene Name:	aurora kinase C
Database Link:	NP_001015878 Entrez Gene 6795 Human Q9UQB9
Synonyms:	AIE2; AIK3; ARK3; AurC; aurora-C; HEL-S-90; SPGF5; STK13
Protein Families:	Druggable Genome, Protein Kinase

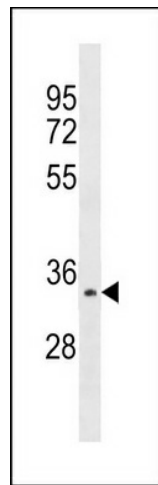


[View online »](#)

Product images:



The anti-Aurora C Pab (Cat. #TA324890) is used in WB to detect Aurora C in lysates of 293 cells expressing Flag tag (lane 1), Flag-tagged Aurora A (lane 2), Flag-tagged Aurora B (lane 3) or Flag-tagged Aurora C (lane 4). In the IF, staining of HeLa cells expressing GFP-Aurora C is performed at different cellular mitotic stages with the anti-Aurora C Pab (column A), GFP fluorescence (column B), DAPI nuclear staining (column C), and anti-Aurora C merged to DAPI staining (column D).



Aurora-C Antibody (C-term) (Cat. #TA324890) western blot analysis in HepG2 cell line lysates (35ug/lane). This demonstrates the Aurora-C antibody detected the Aurora-C protein (arrow).