

## Product datasheet for **TA324888**

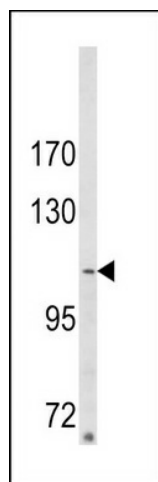
### SORBS2 Rabbit Polyclonal Antibody

#### Product data:

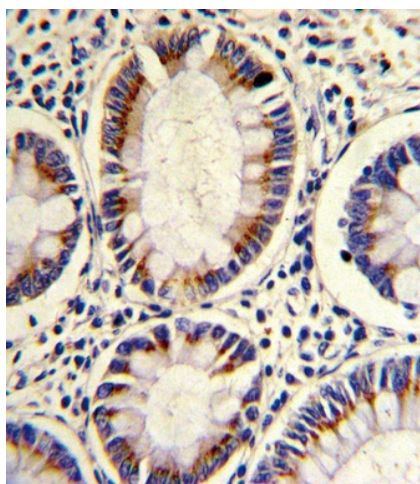
Product Type:	Primary Antibodies
Applications:	FC, IF, IHC, WB
Recommended Dilution:	IF: 1:10~50, WB: 1:1000, IHC: 1:10~50, FC: 1:10~50
Reactivity:	Human (Predicted: Mouse, Rat, Pig)
Host:	Rabbit
Isotype:	IgG
Clonality:	Polyclonal
Immunogen:	This ARGBP2 antibody is generated from rabbits immunized with a KLH conjugated synthetic peptide between 175-204 amino acids from the N-terminal region of human ARGBP2.
Formulation:	Purified polyclonal antibody supplied in PBS with 0.09% (W/V) sodium azide.
Concentration:	lot specific
Purification:	This antibody is prepared by Saturated Ammonium Sulfate (SAS) precipitation followed by dialysis against PBS.
Conjugation:	Unconjugated
Storage:	Store at -20°C as received.
Stability:	Stable for 12 months from date of receipt.
Predicted Protein Size:	124108 Da
Gene Name:	sorbin and SH3 domain containing 2
Database Link:	<a href="#">NP_066547</a> <a href="#">Entrez Gene 114901 RatEntrez Gene 234214 MouseEntrez Gene 8470 Human O94875</a>
Synonyms:	ARGBP2; PRO0618



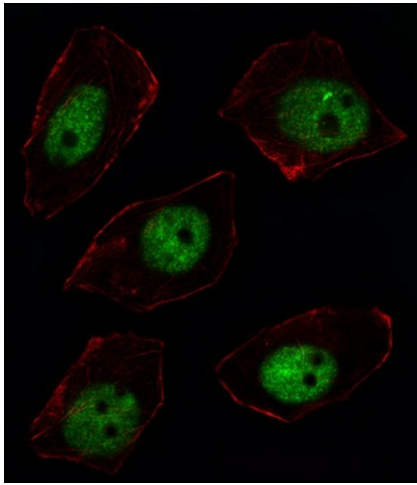
[View online »](#)

**Product images:**

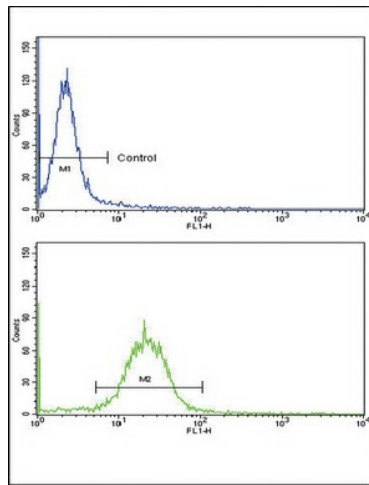
Western blot analysis of ARGBP2 Antibody (N-term) (Cat. #TA324888) in MDA-MB231 cell line lysates (35ug/lane). ARGBP2 (arrow) was detected using the purified Pab.



Formalin-fixed and paraffin-embedded human colon carcinoma reacted with ARGBP2 Antibody (N-term), which was peroxidase-conjugated to the secondary antibody, followed by DAB staining. This data demonstrates the use of this antibody for immunohistochemistry; clinical relevance has not been evaluated.



IF image of U251 cell stained with ARGBP2 Antibody (N-term) (Cat#TA324888). U251 cells were incubated with ARGBP2 primary antibody (1:25, 1 h at 37°C). For secondary antibody, Alexa Fluor® 488 conjugated donkey anti-rabbit antibody (green) was used (1:400). Cytoplasmic actin was counterstained with Alexa Fluor® 555 (red) conjugated Phalloidin (7 units/ml). ARGBP2 immunoreactivity is localized to Nucleus significantly.



Flow cytometric analysis of MDA-231 cells using ARGBP2 Antibody (N-term) (bottom histogram) compared to a negative control cell (top histogram). FITC-conjugated goat-anti-rabbit secondary antibodies were used for the analysis.