

Product datasheet for **TA324887S**

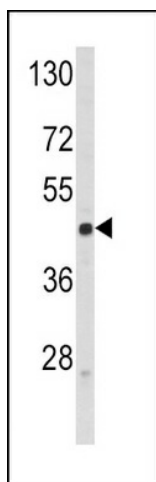
CD62L (SELL) Rabbit Polyclonal Antibody

Product data:

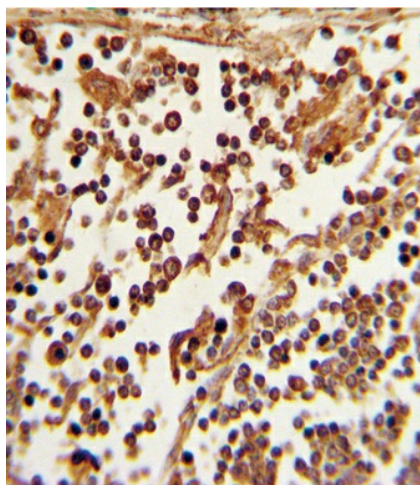
Product Type:	Primary Antibodies
Applications:	FC, IHC, WB
Recommended Dilution:	WB: 1:1000, IHC: 1:10~50, FC: 1:10~50
Reactivity:	Human
Host:	Rabbit
Isotype:	IgG
Clonality:	Polyclonal
Immunogen:	This SELL antibody is generated from rabbits immunized with a KLH conjugated synthetic peptide between 346-372 amino acids from the C-terminal region of human SELL.
Formulation:	Purified polyclonal antibody supplied in PBS with 0.09% (W/V) sodium azide.
Concentration:	lot specific
Purification:	This antibody is purified through a protein A column, followed by peptide affinity purification.
Conjugation:	Unconjugated
Storage:	Store at -20°C as received.
Stability:	Stable for 12 months from date of receipt.
Predicted Protein Size:	42187 Da
Gene Name:	selectin L
Database Link:	NP_000646 Entrez Gene 6402 Human P14151
Synonyms:	CD62L; LAM1; LECAM1; LEU8; LNHR; LSEL; LYAM1; PLNHR; TQ1
Protein Families:	Druggable Genome, ES Cell Differentiation/IPS, Transmembrane
Protein Pathways:	Cell adhesion molecules (CAMs)


[View online »](#)

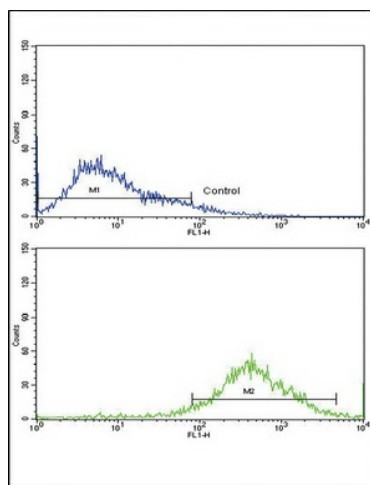
Product images:



Western blot analysis of SELL Antibody (C-term) (Cat. #TA324887) in Jurkat cell line lysates (35ug/lane).SELL (arrow) was detected using the purified Pab.



Formalin-fixed and paraffin-embedded human lymph tissue with SELL Antibody (C-term), which was peroxidase-conjugated to the secondary antibody, followed by DAB staining. This data demonstrates the use of this antibody for immunohistochemistry; clinical relevance has not been evaluated.



Flow cytometric analysis of Jurkat cells using SELL Antibody (C-term) (bottom histogram) compared to a negative control cell (top histogram). FITC-conjugated goat-anti-rabbit secondary antibodies were used for the analysis.