

Product datasheet for **TA324885**

CD28 Rabbit Polyclonal Antibody

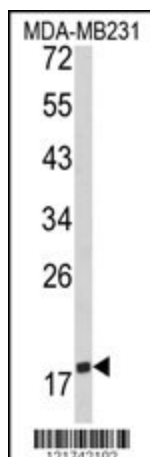
Product data:

Product Type:	Primary Antibodies
Applications:	IF, WB
Recommended Dilution:	WB: 1:1000, IF: 1:10~50
Reactivity:	Human (Predicted: Rabbit)
Host:	Rabbit
Isotype:	IgG
Clonality:	Polyclonal
Immunogen:	This CD28 antibody is generated from rabbits immunized with a KLH conjugated synthetic peptide between 182-208 amino acids from the C-terminal region of human CD28.
Formulation:	Purified polyclonal antibody supplied in PBS with 0.09% (W/V) sodium azide.
Concentration:	lot specific
Purification:	This antibody is purified through a protein A column, followed by peptide affinity purification.
Conjugation:	Unconjugated
Storage:	Store at -20°C as received.
Stability:	Stable for 12 months from date of receipt.
Predicted Protein Size:	25066 Da
Gene Name:	CD28 molecule
Database Link:	NP_006130 Entrez Gene 940 Human P10747
Synonyms:	Tp44
Protein Families:	Druggable Genome, Transmembrane
Protein Pathways:	Allograft rejection, Autoimmune thyroid disease, Cell adhesion molecules (CAMs), Graft-versus-host disease, Systemic lupus erythematosus, T cell receptor signaling pathway, Type I diabetes mellitus, Viral myocarditis

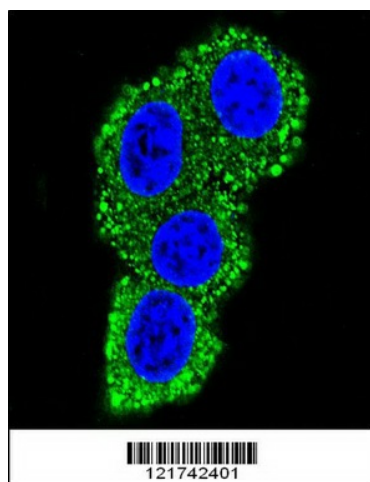


[View online »](#)

Product images:



Western blot analysis of CD28 Antibody (C-term) (Cat. #TA324885) in MDA-MB231 cell line lysates (35ug/lane). CD28 (arrow) was detected using the purified Pab.



Confocal immunofluorescent analysis of CD28 Antibody (C-term) (Cat. #TA324885) with Hela cell followed by Alexa Fluor® 489-conjugated goat anti-rabbit IgG (green). DAPI was used to stain the cell nuclear (blue).