

## Product datasheet for **TA324882S**

### Fos B (FOSB) Rabbit Polyclonal Antibody

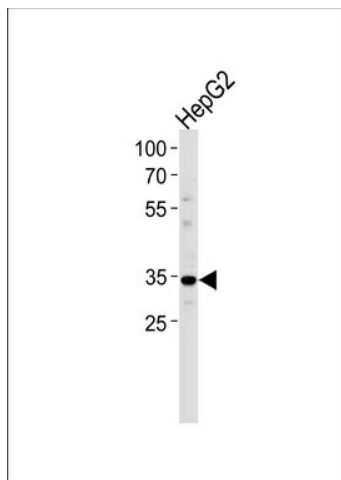
#### Product data:

Product Type:	Primary Antibodies
Applications:	FC, WB
Recommended Dilution:	WB: 1:1000, FC: 1:10~50
Reactivity:	Human (Predicted: Mouse)
Host:	Rabbit
Isotype:	IgG
Clonality:	Polyclonal
Immunogen:	This FOSB antibody is generated from rabbits immunized with a KLH conjugated synthetic peptide between 122-149 amino acids from the Central region of human FOSB.
Formulation:	Purified polyclonal antibody supplied in PBS with 0.09% (W/V) sodium azide.
Concentration:	lot specific
Purification:	This antibody is prepared by Saturated Ammonium Sulfate (SAS) precipitation followed by dialysis against PBS.
Conjugation:	Unconjugated
Storage:	Store at -20°C as received.
Stability:	Stable for 12 months from date of receipt.
Predicted Protein Size:	35928 Da
Gene Name:	FosB proto-oncogene, AP-1 transcription factor subunit
Database Link:	<a href="#">NP_001107643</a> <a href="#">Entrez Gene 14282 Mouse</a> <a href="#">Entrez Gene 2354 Human</a> <a href="#">P53539</a>
Synonyms:	AP-1; G0S3; GOS3; GOSB
Protein Families:	Druggable Genome, Transcription Factors

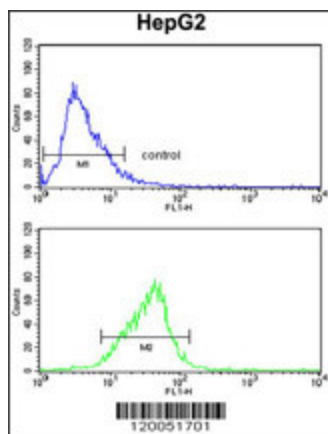


[View online »](#)

Product images:



FOSB Antibody (CenterP137) (Cat. #[TA324882]) western blot analysis in HepG2 cell line lysates (35ug/lane). This demonstrates the FOSB antibody detected the FOSB protein (arrow).



FOSB Antibody (Center P137) (Cat.#[TA324882]) flow cytometry analysis of HepG2 cells (bottom histogram) compared to a negative control cell (top histogram). FITC-conjugated goat-anti-rabbit secondary antibodies were used for the analysis.