

Product datasheet for **TA324881**

TMPRSS3 Rabbit Polyclonal Antibody

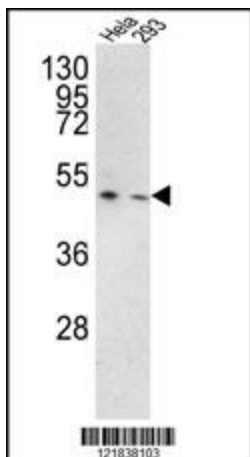
Product data:

| | |
|--------------------------------|---|
| Product Type: | Primary Antibodies |
| Applications: | IF, WB |
| Recommended Dilution: | WB: 1:1000, IF: 1:10~50 |
| Reactivity: | Human |
| Host: | Rabbit |
| Isotype: | IgG |
| Clonality: | Polyclonal |
| Immunogen: | This TMPRSS3 antibody is generated from rabbits immunized with a KLH conjugated synthetic peptide between 272-300 amino acids from the Central region of human TMPRSS3. |
| Formulation: | Purified polyclonal antibody supplied in PBS with 0.09% (W/V) sodium azide. |
| Concentration: | lot specific |
| Purification: | This antibody is purified through a protein A column, followed by peptide affinity purification. |
| Conjugation: | Unconjugated |
| Storage: | Store at -20°C as received. |
| Stability: | Stable for 12 months from date of receipt. |
| Predicted Protein Size: | 49405 Da |
| Gene Name: | transmembrane protease, serine 3 |
| Database Link: | NP_115777 Entrez Gene 64699 Human P57727 |
| Synonyms: | DFNB8; DFNB10; ECHOS1; OTTHUMP00000109345; serine 3; serine protease TADG12; TADG12; transmembrane protease |
| Protein Families: | Druggable Genome, Protease, Transmembrane |

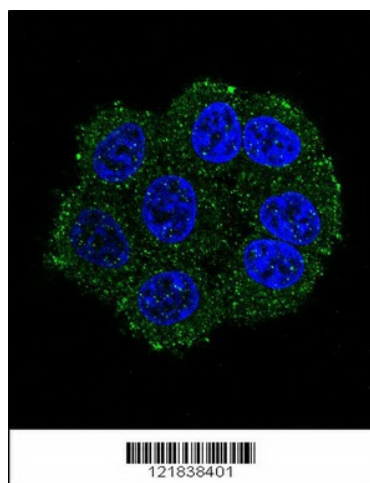


[View online »](#)

Product images:



Western blot analysis of TMPRSS3 Antibody (Center) (Cat. #TA324881) in HeLa, 293 cell line lysates (35ug/lane). TMPRSS3 (arrow) was detected using the purified Pab.



Confocal immunofluorescent analysis of TMPRSS3 Antibody (Center) (Cat#TA324881) with HeLa cell followed by Alexa Fluor 488-conjugated goat anti-rabbit IgG (green). DAPI was used to stain the cell nuclear (blue).