

Product datasheet for **TA324880**

Ornithine Carbamoyltransferase (OTC) Rabbit Polyclonal Antibody

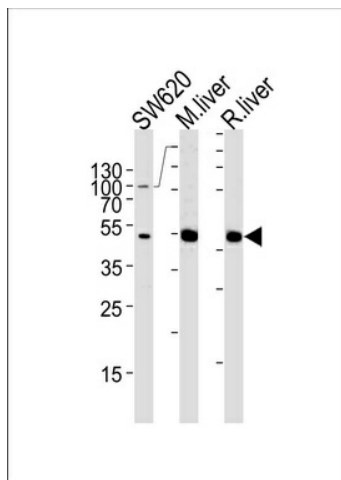
Product data:

Product Type:	Primary Antibodies
Applications:	FC, IHC, WB
Recommended Dilution:	WB: 1:1000, IHC: 1:10~50, FC: 1:10~50
Reactivity:	Human (Predicted: Mouse, Rat, Bovine, Pig)
Host:	Rabbit
Isotype:	IgG
Clonality:	Polyclonal
Immunogen:	This OTC antibody is generated from rabbits immunized with a KLH conjugated synthetic peptide between 71-98 amino acids from the Central region of human OTC.
Formulation:	Purified polyclonal antibody supplied in PBS with 0.09% (W/V) sodium azide.
Concentration:	lot specific
Purification:	This antibody is purified through a protein A column, followed by peptide affinity purification.
Conjugation:	Unconjugated
Storage:	Store at -20°C as received.
Stability:	Stable for 12 months from date of receipt.
Predicted Protein Size:	39935 Da
Gene Name:	ornithine carbamoyltransferase
Database Link:	NP_000522 Entrez Gene 18416 Mouse Entrez Gene 25611 Rat Entrez Gene 5009 Human P00480
Synonyms:	OCTD
Protein Families:	Druggable Genome
Protein Pathways:	Arginine and proline metabolism, Metabolic pathways

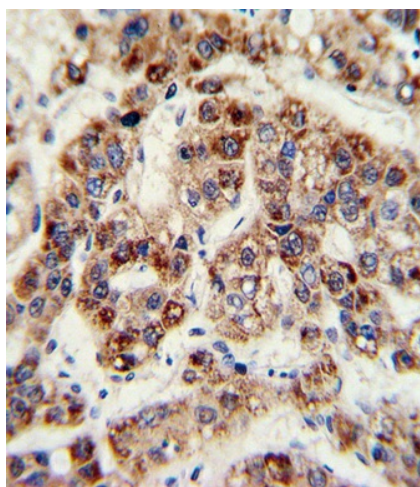


[View online »](#)

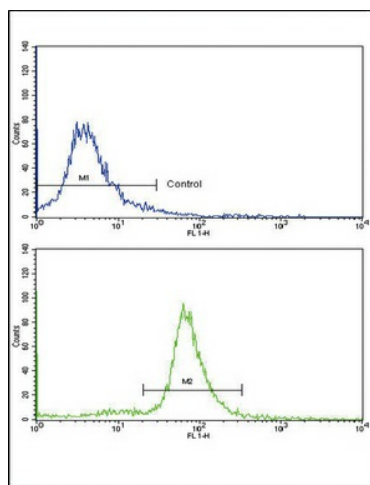
Product images:



OTC Antibody (Center) (Cat.# TA324880) western blot analysis in SW620 cell line and mouse liver⁺ rat liver lysates (35ug/lane). This demonstrates the OTC antibody detected the OTC protein (arrow).



Formalin-fixed and paraffin-embedded human hepatocarcinoma with OTC Antibody (Center), which was peroxidase-conjugated to the secondary antibody, followed by DAB staining. This data demonstrates the use of this antibody for immunohistochemistry; clinical relevance has not been evaluated.



Flow cytometric analysis of ATDC5 cells using OTC Antibody (Center) (bottom histogram) compared to a negative control cell (top histogram). FITC-conjugated goat-anti-rabbit secondary antibodies were used for the analysis.