

Product datasheet for **TA324878S**

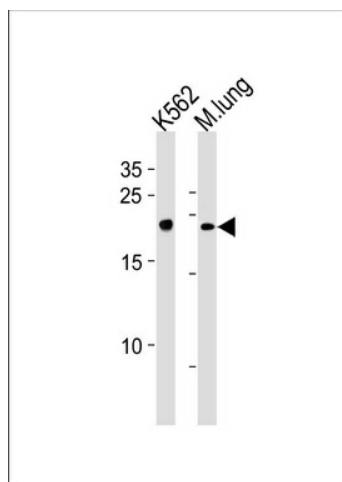
CBFB Rabbit Polyclonal Antibody

Product data:

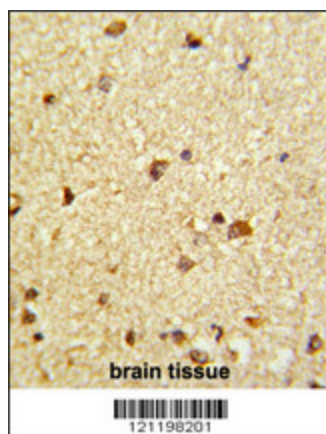
Product Type:	Primary Antibodies
Applications:	FC, IF, IHC, WB
Recommended Dilution:	WB: 1:1000, IHC: 1:50~100, FC: 1:10~50, IF: 1:10~50
Reactivity:	Human, Mouse
Host:	Rabbit
Isotype:	IgG
Clonality:	Polyclonal
Immunogen:	This CBFB antibody is generated from rabbits immunized with a KLH conjugated synthetic peptide between 61-90 amino acids from the Central region of human CBFB.
Formulation:	Purified polyclonal antibody supplied in PBS with 0.09% (W/V) sodium azide.
Concentration:	lot specific
Purification:	This antibody is purified through a protein A column, followed by peptide affinity purification.
Conjugation:	Unconjugated
Storage:	Store at -20°C as received.
Stability:	Stable for 12 months from date of receipt.
Predicted Protein Size:	21508 Da
Gene Name:	core-binding factor, beta subunit
Database Link:	NP_001746 Entrez Gene 12400 Mouse Entrez Gene 865 Human Q13951
Synonyms:	PEBP2B
Protein Families:	Druggable Genome, Transcription Factors



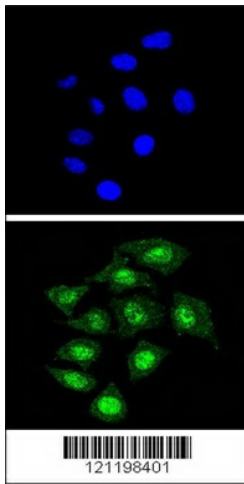
[View online »](#)

Product images:

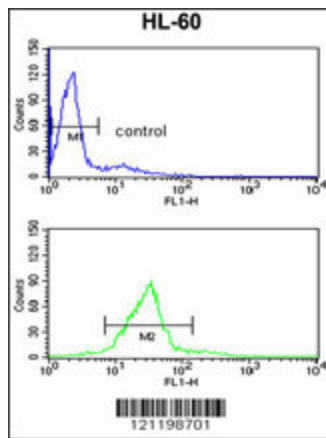
CBFB Antibody (Center) (Cat. #[TA324878]) western blot analysis in K562 cell line and mouse lung tissue lysates (35ug/lane). This demonstrates the CFBF antibody detected the CFBF protein (arrow).



Formalin-fixed and paraffin-embedded human brain tissue reacted with CFBF Antibody (Center), which was peroxidase-conjugated to the secondary antibody, followed by DAB staining. This data demonstrates the use of this antibody for immunohistochemistry; clinical relevance has not been evaluated.



Confocal immunofluorescent analysis of CBBF Antibody (Center) (Cat. #[TA324878]) with 293 cell followed by Alexa Fluor 488-conjugated goat anti-rabbit IgG (green). DAPI was used to stain the cell nuclear (blue).



CBBF Antibody (Center) (Cat. #[TA324878]) flow cytometry analysis of HL-60 cells (bottom histogram) compared to a negative control cell (top histogram). FITC-conjugated goat-anti-rabbit secondary antibodies were used for the analysis.