

Product datasheet for TA324876S

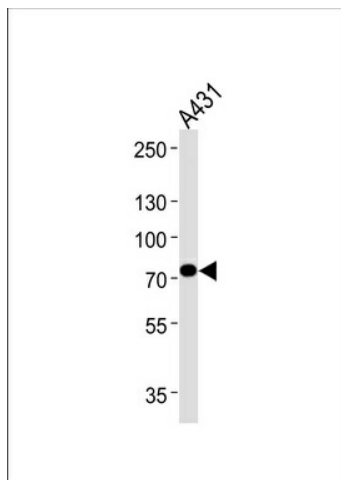
HADHA Rabbit Polyclonal Antibody

Product data:

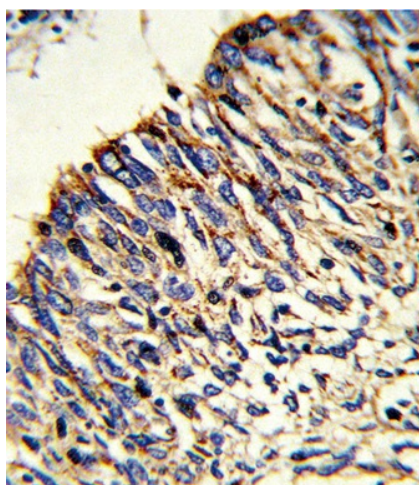
Product Type:	Primary Antibodies
Applications:	FC, IHC, WB
Recommended Dilution:	WB: 1:1000, IHC: 1:10~50, FC: 1:10~50
Reactivity:	Human
Host:	Rabbit
Isotype:	IgG
Clonality:	Polyclonal
Immunogen:	This HADHA antibody is generated from rabbits immunized with a KLH conjugated synthetic peptide between 737-763 amino acids from the C-terminal region of human HADHA.
Formulation:	Purified polyclonal antibody supplied in PBS with 0.09% (W/V) sodium azide.
Concentration:	lot specific
Purification:	This antibody is purified through a protein A column, followed by peptide affinity purification.
Conjugation:	Unconjugated
Storage:	Store at -20°C as received.
Stability:	Stable for 12 months from date of receipt.
Predicted Protein Size:	83000 Da
Gene Name:	hydroxyacyl-CoA dehydrogenase/3-ketoacyl-CoA thiolase/enoyl-CoA hydratase (trifunctional protein), alpha subunit
Database Link:	NP_000173 Entrez Gene 3030 Human P40939
Synonyms:	ECHA; GBP; HADH; LCEH; LCHAD; MTPA; TP-ALPHA
Protein Families:	Druggable Genome
Protein Pathways:	beta-Alanine metabolism, Biosynthesis of unsaturated fatty acids, Butanoate metabolism, Fatty acid elongation in mitochondria, Fatty acid metabolism, Limonene and pinene degradation, Lysine degradation, Metabolic pathways, Propanoate metabolism, Tryptophan metabolism, Valine, leucine and isoleucine degradation


[View online »](#)

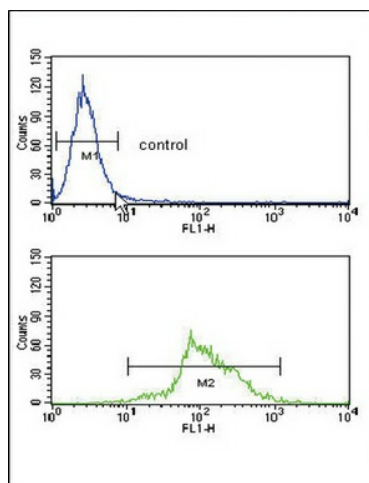
Product images:



HADHA Antibody (C-term) (Cat.# [TA324876]) western blot analysis in A431 cell line lysates (35ug/lane). This demonstrates the HADHA antibody detected the HADHA protein (arrow).



Formalin-fixed and paraffin-embedded human lung carcinoma reacted with HADHA Antibody (C-term), which was peroxidase-conjugated to the secondary antibody, followed by DAB staining. This data demonstrates the use of this antibody for immunohistochemistry; clinical relevance has not been evaluated.



HADHA Antibody (C-term) (Cat. #TA324876S) flow cytometry analysis of Ramos cells (bottom histogram) compared to a negative control cell (top histogram). FITC-conjugated goat-anti-rabbit secondary antibodies were used for the analysis.