

## Product datasheet for **TA324875S**

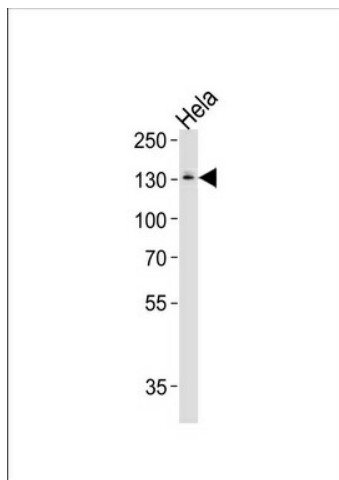
### TFII I (GTF2I) Rabbit Polyclonal Antibody

#### Product data:

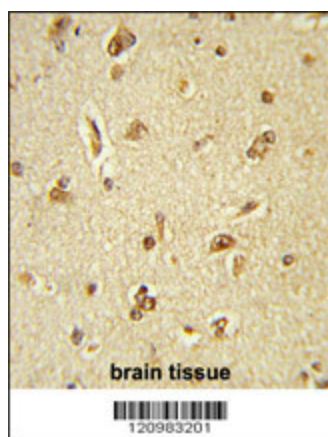
Product Type:	Primary Antibodies
Applications:	FC, IF, IHC, WB
Recommended Dilution:	IF: 1:10~50, WB: 1:1000, IHC: 1:50~100, FC: 1:10~50
Reactivity:	Human (Predicted: Rat)
Host:	Rabbit
Isotype:	IgG
Clonality:	Polyclonal
Immunogen:	This GTF2I antibody is generated from rabbits immunized with a KLH conjugated synthetic peptide between 956-985 amino acids from the C-terminal region of human GTF2I.
Formulation:	Purified polyclonal antibody supplied in PBS with 0.09% (W/V) sodium azide.
Concentration:	lot specific
Purification:	This antibody is purified through a protein A column, followed by peptide affinity purification.
Conjugation:	Unconjugated
Storage:	Store at -20°C as received.
Stability:	Stable for 12 months from date of receipt.
Predicted Protein Size:	112416 Da
Gene Name:	general transcription factor Iii
Database Link:	<a href="#">NP_127494</a> <a href="#">Entrez Gene 353256 Rat</a> <a href="#">Entrez Gene 2969 Human</a> <a href="#">P78347</a>
Synonyms:	BAP135; BTKAP1; DIWS; GTFII-I; IB291; SPIN; TFII-I; WBS; WBSCR6
Protein Families:	Transcription Factors
Protein Pathways:	Basal transcription factors



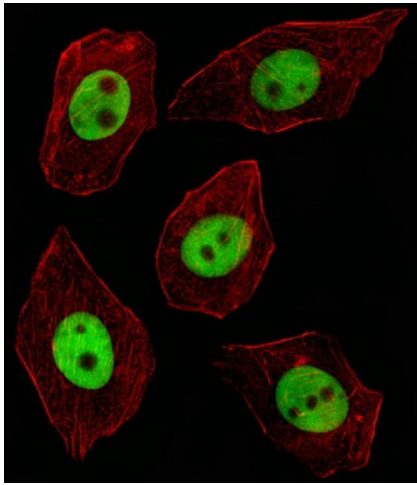
[View online »](#)

**Product images:**

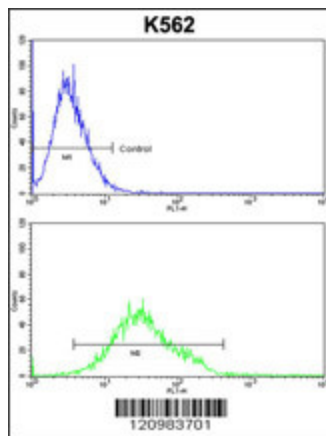
GTF2I Antibody (C-term) (Cat. #[TA324875]) western blot analysis in HeLa cell line lysates (35ug/lane). This demonstrates the GTF2I antibody detected the GTF2I protein (arrow).



Formalin-fixed and paraffin-embedded human brain tissue reacted with GTF2I Antibody (C-term), which was peroxidase-conjugated to the secondary antibody, followed by DAB staining. This data demonstrates the use of this antibody for immunohistochemistry; clinical relevance has not been evaluated.



IF image of A549 cell stained with GTF2I Antibody (C-term) (Cat#[TA324875]/SA091106AV). A549 cells were incubated with GTF2I primary antibody (1:25, 1 h at 37°C). For secondary antibody, Alexa Fluor® 488 conjugated donkey anti-rabbit antibody (green) was used (1:400). Cytoplasmic actin was counterstained with Alexa Fluor® 555 (red) conjugated Phalloidin (7 units/ml). GTF2I immunoreactivity is localized to Nucleus significantly.



GTF2I Antibody (C-term) (Cat. #[TA324875]) flow cytometric analysis of K562 cells (bottom histogram) compared to a negative control cell (top histogram). FITC-conjugated goat-anti-rabbit secondary antibodies were used for the analysis.