

Product datasheet for **TA324873**

ASPA Rabbit Polyclonal Antibody

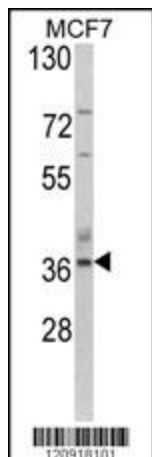
Product data:

Product Type:	Primary Antibodies
Applications:	FC, IF, IHC, WB
Recommended Dilution:	WB: 1:1000, IHC: 1:50~100, FC: 1:10~50, IF: 1:10~50
Reactivity:	Human (Predicted: Bovine)
Host:	Rabbit
Isotype:	IgG
Clonality:	Polyclonal
Immunogen:	This ASPA antibody is generated from rabbits immunized with a KLH conjugated synthetic peptide between 82-110 amino acids from the N-terminal region of human ASPA.
Formulation:	Purified polyclonal antibody supplied in PBS with 0.09% (W/V) sodium azide.
Concentration:	lot specific
Purification:	This antibody is prepared by Saturated Ammonium Sulfate (SAS) precipitation followed by dialysis against PBS.
Conjugation:	Unconjugated
Storage:	Store at -20°C as received.
Stability:	Stable for 12 months from date of receipt.
Predicted Protein Size:	35735 Da
Gene Name:	aspartoacylase
Database Link:	NP_000040 Entrez Gene 443 Human P45381
Synonyms:	ACY2; ASP
Protein Families:	Druggable Genome
Protein Pathways:	Alanine, aspartate and glutamate metabolism, Histidine metabolism

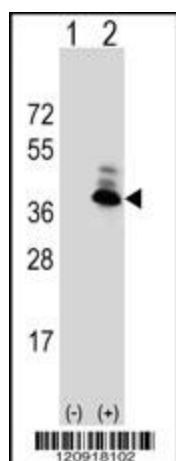


[View online »](#)

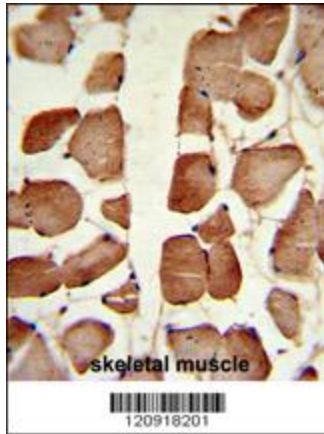
Product images:



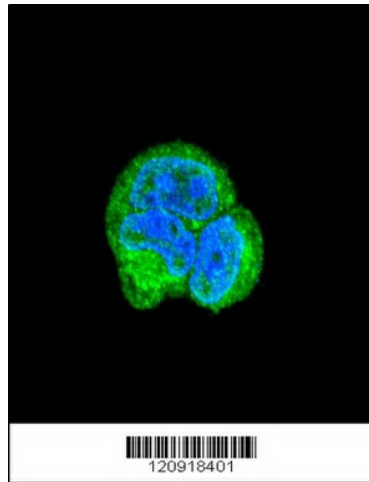
Western blot analysis of ASPA Antibody (N-term) (Cat. #TA324873) in MCF7 cell line lysates (35ug/lane). ASPA (arrow) was detected using the purified Pab.



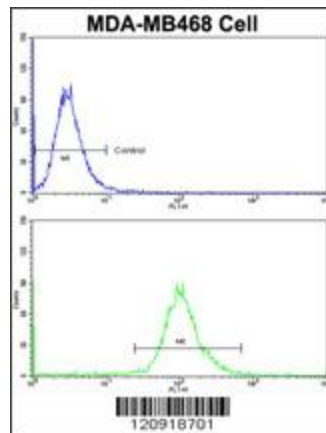
Western blot analysis of ASPA (arrow) using rabbit polyclonal ASPA Antibody (N-term) (Cat. #TA324873). 293 cell lysates (2 ug/lane) either nontransfected (Lane 1) or transiently transfected (Lane 2) with the ASPA gene.



Formalin-fixed and paraffin-embedded human skeletal muscle reacted with ASPA Antibody (N-term), which was peroxidase-conjugated to the secondary antibody, followed by DAB staining. This data demonstrates the use of this antibody for immunohistochemistry; clinical relevance has not been evaluated.



Confocal immunofluorescent analysis of ASPA Antibody (N-term) (Cat. #TA324873) with MCF-7 cell followed by Alexa Fluor® 488-conjugated goat anti-rabbit IgG (green). DAPI was used to stain the cell nuclear (blue).



Flow cytometric analysis of MDA-MB468 cells using ASPA Antibody (N-term) (bottom histogram) compared to a negative control cell (top histogram). FITC-conjugated goat-anti-rabbit secondary antibodies were used for the analysis.