

## Product datasheet for **TA324872**

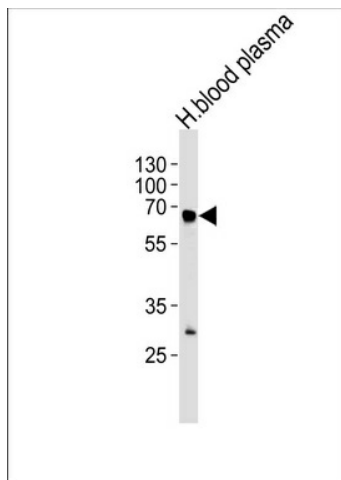
### Fibrinogen alpha chain (FGA) Rabbit Polyclonal Antibody

#### Product data:

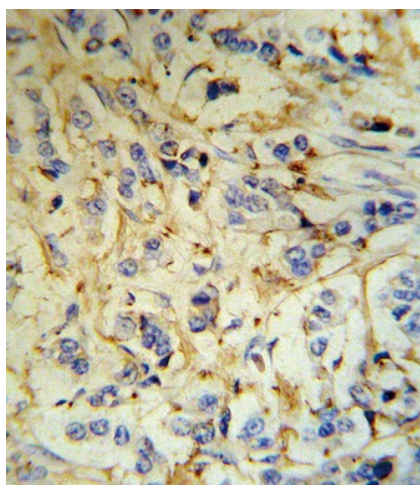
Product Type:	Primary Antibodies
Applications:	IF, IHC, WB
Recommended Dilution:	WB: 1:1000, IHC: 1:10~50, IF: 1:10~50
Reactivity:	Human
Host:	Rabbit
Isotype:	IgG
Clonality:	Polyclonal
Immunogen:	This FGA antibody is generated from rabbits immunized with a KLH conjugated synthetic peptide between 116-144 amino acids from the N-terminal region of human FGA.
Formulation:	Purified polyclonal antibody supplied in PBS with 0.09% (W/V) sodium azide.
Concentration:	lot specific
Purification:	This antibody is prepared by Saturated Ammonium Sulfate (SAS) precipitation followed by dialysis against PBS.
Conjugation:	Unconjugated
Storage:	Store at -20°C as received.
Stability:	Stable for 12 months from date of receipt.
Predicted Protein Size:	94973 Da
Gene Name:	fibrinogen alpha chain
Database Link:	<a href="#">NP_000499</a> <a href="#">Entrez Gene 2243 Human</a> <a href="#">P02671</a>
Synonyms:	Fib2
Protein Families:	Druggable Genome, Secreted Protein
Protein Pathways:	Complement and coagulation cascades



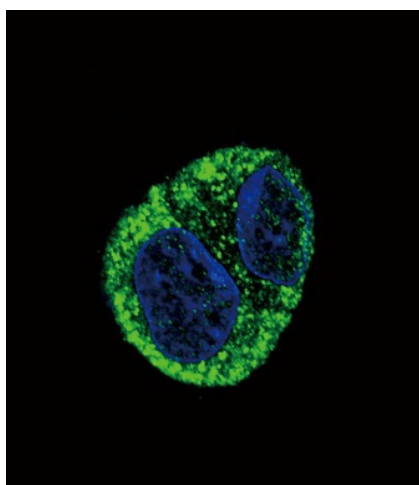
[View online »](#)

**Product images:**

FGA Antibody (N-term) (Cat. #TA324872) western blot analysis in human blood plasma tissue lysates (35ug/lane). This demonstrates the FGA antibody detected the FGA protein (arrow).



FGA Antibody (N-term) (RB18707) IHC analysis in formalin fixed and paraffin embedded human breast carcinoma tissue followed by peroxidase conjugation of the secondary antibody and DAB staining. This data demonstrates the use of the FGA Antibody (N-term) for immunohistochemistry. Clinical relevance has not been evaluated.



Confocal immunofluorescent analysis of FGA Antibody (N-term) (Cat#TA324872) with HepG2 cell followed by Alexa Fluor 488-conjugated goat anti-rabbit IgG (green). DAPI was used to stain the cell nuclear (blue).