

Product datasheet for **TA324871S**

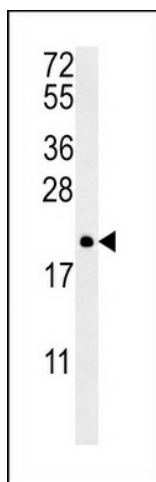
PTP4A2 Rabbit Polyclonal Antibody

Product data:

Product Type:	Primary Antibodies
Applications:	FC, IF, IHC, WB
Recommended Dilution:	WB: 1:1000, IHC: 1:50~100, FC: 1:10~50, IF: 1:10~50
Reactivity:	Human (Predicted: Mouse, Rat)
Host:	Rabbit
Isotype:	IgG
Clonality:	Polyclonal
Immunogen:	This PTP4A2 antibody is generated from rabbits immunized with a KLH conjugated synthetic peptide between 32-59 amino acids from the Central region of human PTP4A2.
Formulation:	Purified polyclonal antibody supplied in PBS with 0.09% (W/V) sodium azide.
Concentration:	lot specific
Purification:	This antibody is purified through a protein A column, followed by peptide affinity purification.
Conjugation:	Unconjugated
Storage:	Store at -20°C as received.
Stability:	Stable for 12 months from date of receipt.
Predicted Protein Size:	19127 Da
Gene Name:	protein tyrosine phosphatase type IVA, member 2
Database Link:	NP_536317 Entrez Gene 19244 Mouse Entrez Gene 85237 Rat Entrez Gene 8073 Human Q12974
Synonyms:	HH7-2; HH13; HU-PP-1; OV-1; PRL-2; PRL2; ptp-IV1a; ptp-IV1b; PTP4A; PTPCAAX2
Protein Families:	Druggable Genome, Phosphatase



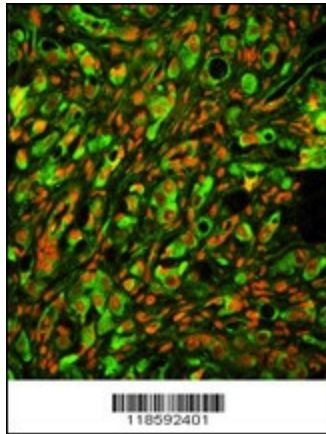
[View online »](#)

Product images:

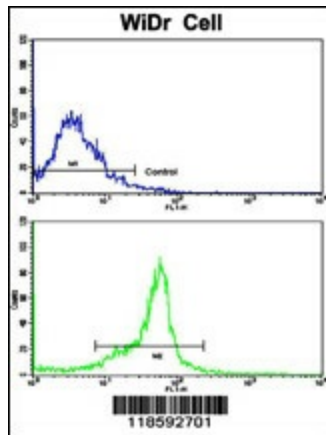
PTP4A2 Antibody (Center) (Cat. #[TA324871]) western blot analysis in NCI-H460 cell line lysates (35ug/lane). This demonstrates the PTP4A2 antibody detected the PTP4A2 protein (arrow).



Formalin-fixed and paraffin-embedded human prostate carcinoma with PTP4A2 Antibody (Center), which was peroxidase-conjugated to the secondary antibody, followed by DAB staining. This data demonstrates the use of this antibody for immunohistochemistry; clinical relevance has not been evaluated.



Immunofluorescence analysis of PTP4A2 Antibody (Center) with paraffin-embedded human prostate carcinoma tissue. 0.05 mg/ml primary antibody was followed by FITC-conjugated goat anti-rabbit IgG (whole molecule). FITC emits green fluorescence. Red counterstaining is PI.



Flow cytometric analysis of widr cells using PTP4A2 Antibody (Center) (bottom histogram) compared to a negative control cell (top histogram). FITC-conjugated goat-anti-rabbit secondary antibodies were used for the analysis.