

Product datasheet for **TA324867S**

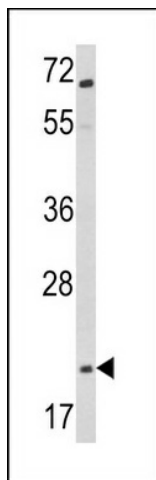
GLP1 (GCG) Rabbit Polyclonal Antibody

Product data:

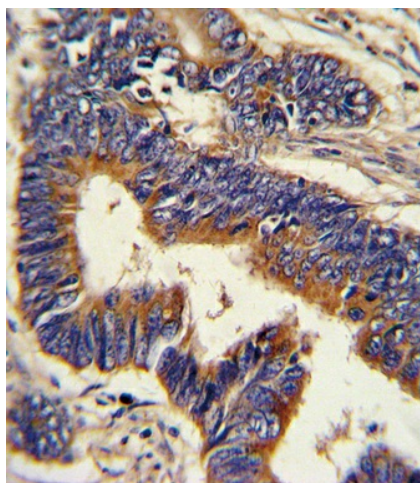
Product Type:	Primary Antibodies
Applications:	FC, IF, IHC, WB
Recommended Dilution:	WB: 1:1000, IHC: 1:10~50, IF: 1:10~50, FC: 1:10~50
Reactivity:	Human
Host:	Rabbit
Isotype:	IgG
Clonality:	Polyclonal
Immunogen:	This Glucagon antibody is generated from rabbits immunized with a KLH conjugated synthetic peptide between 119-148 amino acids from the C-terminal region of human Glucagon.
Formulation:	Purified polyclonal antibody supplied in PBS with 0.09% (W/V) sodium azide.
Concentration:	lot specific
Purification:	This antibody is prepared by Saturated Ammonium Sulfate (SAS) precipitation followed by dialysis against PBS.
Conjugation:	Unconjugated
Storage:	Store at -20°C as received.
Stability:	Stable for 12 months from date of receipt.
Predicted Protein Size:	20909 Da
Gene Name:	glucagon
Database Link:	NP_002045 Entrez Gene 2641 Human P01275
Synonyms:	GLP1; GLP2; GRPP
Protein Families:	Druggable Genome, ES Cell Differentiation/IPS, Secreted Protein



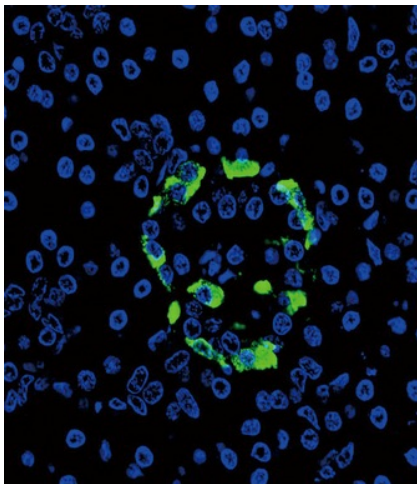
[View online »](#)

Product images:

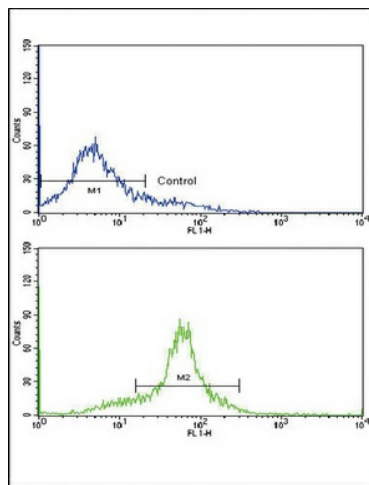
Western blot analysis of Glucagon Antibody (C-term) (Cat. #[TA324867]) in Jurkat cell line lysates (35ug/lane). GCG (arrow) was detected using the purified Pab.



Formalin-fixed and paraffin-embedded human colon carcinoma with Glucagon Antibody (C-term), which was peroxidase-conjugated to the secondary antibody, followed by DAB staining. This data demonstrates the use of this antibody for immunohistochemistry; clinical relevance has not been evaluated.



Confocal immunofluorescent analysis of Glucagon Antibody (C-term) (Cat. #[TA324867]) with pancreas tissue followed by Alexa Fluor 488-conjugated goat anti-rabbit IgG (green). DAPI was used to stain the cell nuclear (blue).



Flow cytometric analysis of WiDr cells using Glucagon Antibody (C-term) (bottom histogram) compared to a negative control cell (top histogram). FITC-conjugated goat-anti-rabbit secondary antibodies were used for the analysis.