

## Product datasheet for **TA324867**

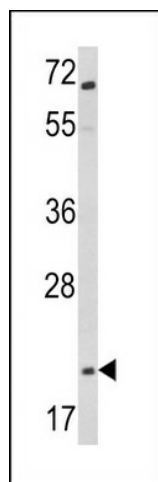
### GLP1 (GCG) Rabbit Polyclonal Antibody

#### Product data:

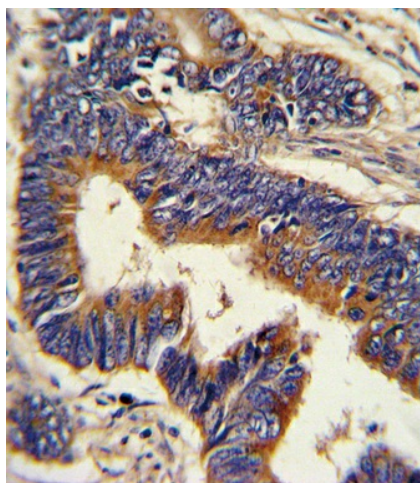
|                         |  |
|-------------------------|--|
| Product Type:           | Primary Antibodies   |
| Applications:           | FC, IF, IHC, WB  |
| Recommended Dilution:   | WB: 1:1000, IHC: 1:10~50, IF: 1:10~50, FC: 1:10~50   |
| Reactivity:             | Human  |
| Host:                   | Rabbit   |
| Isotype:                | IgG  |
| Clonality:              | Polyclonal   |
| Immunogen:              | This Glucagon antibody is generated from rabbits immunized with a KLH conjugated synthetic peptide between 119-148 amino acids from the C-terminal region of human Glucagon. |
| Formulation:            | Purified polyclonal antibody supplied in PBS with 0.09% (W/V) sodium azide.  |
| Concentration:          | lot specific   |
| Purification:           | This antibody is prepared by Saturated Ammonium Sulfate (SAS) precipitation followed by dialysis against PBS.  |
| Conjugation:            | Unconjugated   |
| Storage:                | Store at -20°C as received.  |
| Stability:              | Stable for 12 months from date of receipt.   |
| Predicted Protein Size: | 20909 Da   |
| Gene Name:              | glucagon   |
| Database Link:          | <a href="#">NP_002045</a><br><a href="#">Entrez Gene 2641 Human P01275</a>   |
| Synonyms:               | GLP1; GLP2; GRPP   |
| Protein Families:       | Druggable Genome, ES Cell Differentiation/IPS, Secreted Protein  |



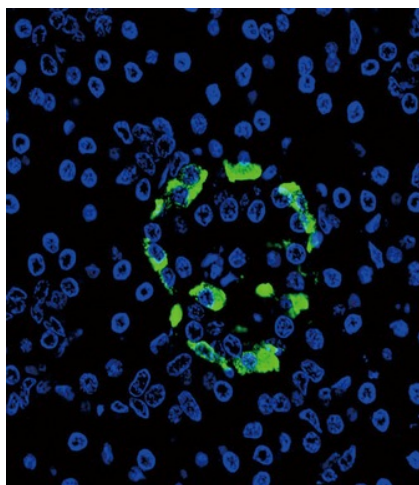
[View online »](#)

**Product images:**

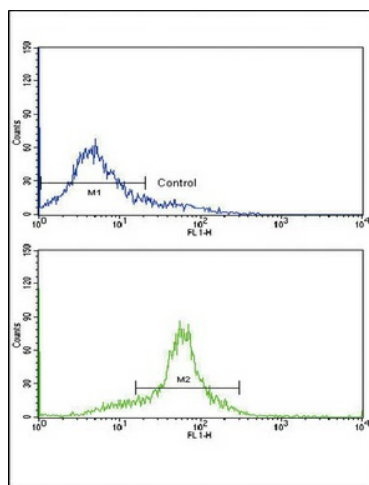
Western blot analysis of Glucagon Antibody (C-term) (Cat. #TA324867) in Jurkat cell line lysates (35ug/lane). GCG (arrow) was detected using the purified Pab.



Formalin-fixed and paraffin-embedded human colon carcinoma with Glucagon Antibody (C-term), which was peroxidase-conjugated to the secondary antibody, followed by DAB staining. This data demonstrates the use of this antibody for immunohistochemistry; clinical relevance has not been evaluated.



Confocal immunofluorescent analysis of Glucagon Antibody (C-term) (Cat. #TA324867) with pancreas tissue followed by Alexa Fluor 488-conjugated goat anti-rabbit IgG (green). DAPI was used to stain the cell nuclear (blue).



Flow cytometric analysis of WiDr cells using Glucagon Antibody (C-term) (bottom histogram) compared to a negative control cell (top histogram). FITC-conjugated goat-anti-rabbit secondary antibodies were used for the analysis.