

Product datasheet for **TA324866**

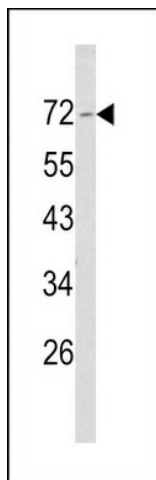
NF2 Rabbit Polyclonal Antibody

Product data:

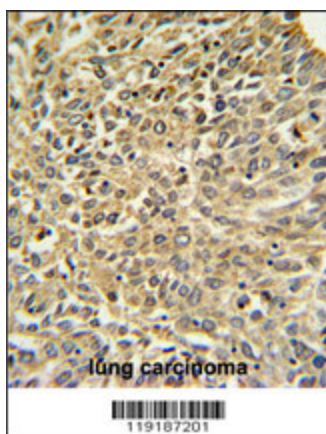
Product Type:	Primary Antibodies
Applications:	IF, IHC, WB
Recommended Dilution:	WB: 1:1000, IHC: 1:50~100, IF: 1:10~50
Reactivity:	Human (Predicted: Mouse, Rat)
Host:	Rabbit
Isotype:	IgG
Clonality:	Polyclonal
Immunogen:	This Merlin antibody is generated from rabbits immunized with a KLH conjugated synthetic peptide between 65-95 amino acids from the N-terminal region of human Merlin.
Formulation:	Purified polyclonal antibody supplied in PBS with 0.09% (W/V) sodium azide.
Concentration:	lot specific
Purification:	This antibody is prepared by Saturated Ammonium Sulfate (SAS) precipitation followed by dialysis against PBS.
Conjugation:	Unconjugated
Storage:	Store at -20°C as received.
Stability:	Stable for 12 months from date of receipt.
Predicted Protein Size:	69690 Da
Gene Name:	neurofibromin 2 (merlin)
Database Link:	NP_000259 Entrez Gene 18016 Mouse Entrez Gene 25744 Rat Entrez Gene 4771 Human P35240
Synonyms:	ACN; BANF; SCH
Protein Families:	Druggable Genome



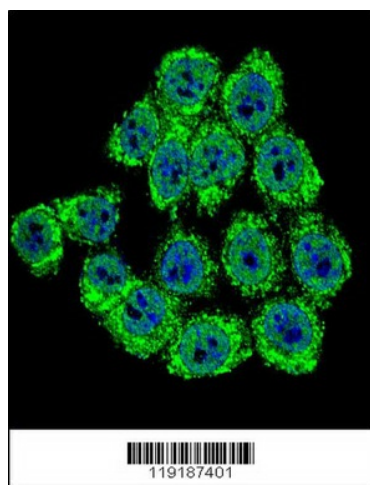
[View online »](#)

Product images:

Western blot analysis of Merlin Antibody (N-term) (Cat. #TA324866) in NCI-H460 cell line lysates (35ug/lane). NF2 (arrow) was detected using the purified Pab.



Merlin Antibody (N-term) (Cat. #TA324866) IHC analysis in formalin fixed and paraffin embedded human lung carcinoma followed by peroxidase conjugation of the secondary antibody and DAB staining. This data demonstrates the use of the Merlin Antibody (N-term) for immunohistochemistry. Clinical relevance has not been evaluated.



Confocal immunofluorescent analysis of Merlin Antibody (N-term) (Cat. #TA324866) with HeLa cell followed by Alexa Fluor® 488-conjugated goat anti-rabbit IgG (green). DAPI was used to stain the cell nuclear (blue).