

Product datasheet for **TA324865S**

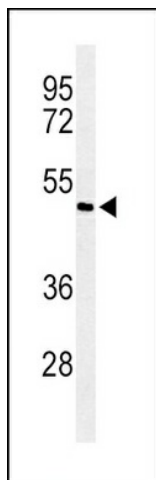
MADH7 (SMAD7) Rabbit Polyclonal Antibody

Product data:

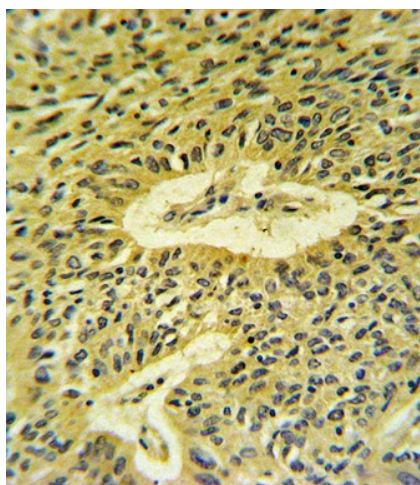
Product Type:	Primary Antibodies
Applications:	IF, IHC, WB
Recommended Dilution:	WB: 1:1000, IHC: 1:10~50, IF: 1:10~50
Reactivity:	Human (Predicted: Rat)
Host:	Rabbit
Isotype:	IgG
Clonality:	Polyclonal
Immunogen:	This Smad7 antibody is generated from rabbits immunized with a KLH conjugated synthetic peptide between 195-224 amino acids from the Central region of human Smad7.
Formulation:	Purified polyclonal antibody supplied in PBS with 0.09% (W/V) sodium azide.
Concentration:	lot specific
Purification:	This antibody is prepared by Saturated Ammonium Sulfate (SAS) precipitation followed by dialysis against PBS.
Conjugation:	Unconjugated
Storage:	Store at -20°C as received.
Stability:	Stable for 12 months from date of receipt.
Predicted Protein Size:	46426 Da
Gene Name:	SMAD family member 7
Database Link:	NP_005895 Entrez Gene 81516 Rat Entrez Gene 4092 Human O15105
Synonyms:	CRCS3; MADH7; MADH8
Protein Families:	Druggable Genome, Transcription Factors
Protein Pathways:	TGF-beta signaling pathway



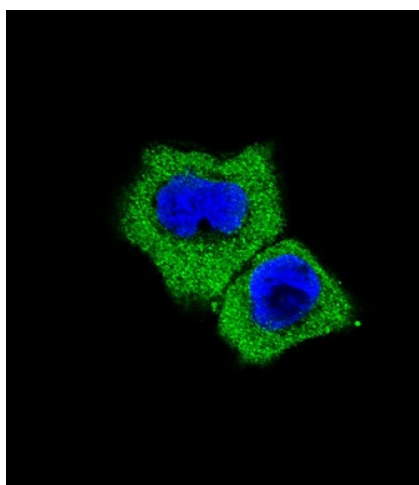
[View online »](#)

Product images:

Western blot analysis of Smad7 Antibody (Center) (Cat. #[TA324865]) in ZR-75-1 cell line lysates (35ug/lane). Smad7 (arrow) was detected using the purified Pab.



Smad7 Antibody (Center) (Cat. #[TA324865]) IHC analysis in formalin fixed and paraffin embedded lung carcinoma followed by peroxidase conjugation of the secondary antibody and DAB staining. This data demonstrates the use of the Smad7 Antibody (Center) for immunohistochemistry. Clinical relevance has not been evaluated.



Fluorescent confocal image of A431 cell stained with Smad7 Antibody (Center) (Cat#[TA324865]). A431 cells were fixed with 4% PFA (20 min), permeabilized with Triton X-100 (0.1%, 10 min), then incubated with Smad7 primary antibody (1:25, 1 h at 37°C). For secondary antibody, Alexa Fluor® 488 conjugated donkey anti-rabbit antibody (green) was used (1:400, 50 min at 37°C). Nuclei were counterstained with DAPI (blue) (10 µg/ml, 10 min). Smad7 immunoreactivity is localized to cytoplasm significantly.