

Product datasheet for **TA324863S**

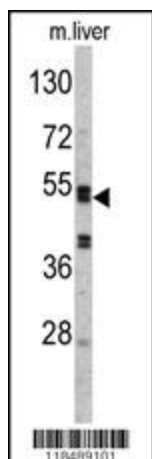
Antithrombin III (SERPINC1) Rabbit Polyclonal Antibody

Product data:

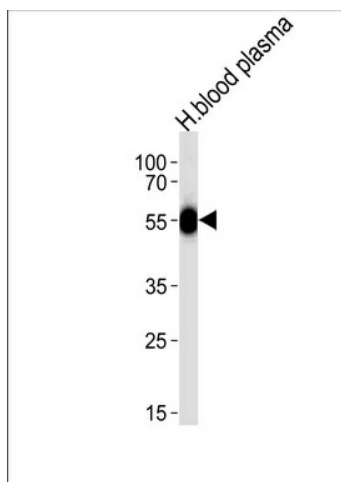
Product Type:	Primary Antibodies
Applications:	FC, IF, IHC, WB
Recommended Dilution:	WB: 1:1000, IHC: 1:50~100, FC: 1:10~50, IF: 1:10~50
Reactivity:	Human, Mouse
Host:	Rabbit
Isotype:	IgG
Clonality:	Polyclonal
Immunogen:	This SERPINC1 antibody is generated from rabbits immunized with a KLH conjugated synthetic peptide between 364-393 amino acids from the C-terminal region of human SERPINC1.
Formulation:	Purified polyclonal antibody supplied in PBS with 0.09% (W/V) sodium azide.
Concentration:	lot specific
Purification:	This antibody is prepared by Saturated Ammonium Sulfate (SAS) precipitation followed by dialysis against PBS.
Conjugation:	Unconjugated
Storage:	Store at -20°C as received.
Stability:	Stable for 12 months from date of receipt.
Predicted Protein Size:	52602 Da
Gene Name:	serpin family C member 1
Database Link:	NP_000479 Entrez Gene 11905 Mouse Entrez Gene 462 Human P01008
Synonyms:	AT3; AT3D; ATIII; THPH7
Protein Families:	Druggable Genome, Secreted Protein
Protein Pathways:	Complement and coagulation cascades


[View online »](#)

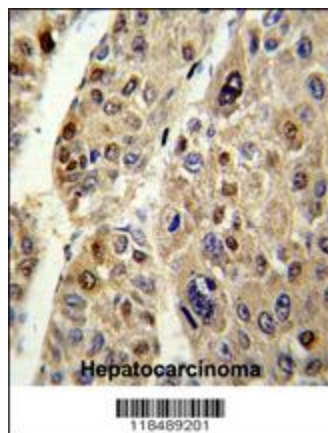
Product images:



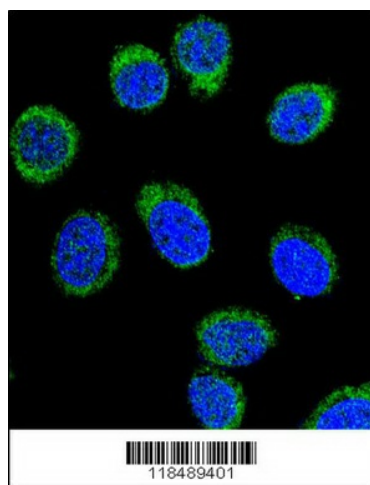
Western blot analysis of SERPINC1 Antibody (C-term) (Cat. #[TA324863]) in mouse liver tissue lysates (35ug/lane). SERPINC1 (arrow) was detected using the purified Pab.



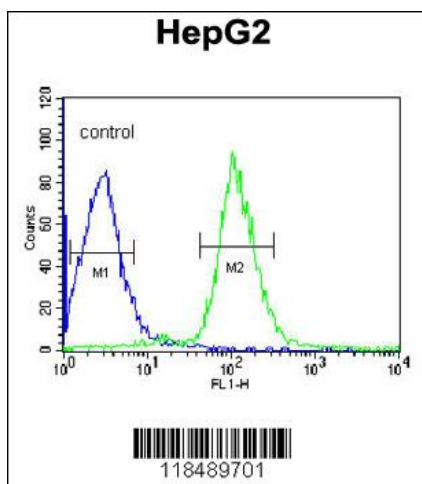
Western blot analysis of lysate from human blood plasma tissue lysate, using SERPINC1 Antibody (C-term) (Cat. #[TA324863]). [TA324863] was diluted at 1:1000 at each lane. A goat anti-rabbit IgG H&L (HRP) at 1:5000 dilution was used as the secondary antibody. Lysate at 35ug per lane.



Formalin-fixed and paraffin-embedded human hepatocarcinoma reacted with SERPINC1 Antibody (C-term), which was peroxidase-conjugated to the secondary antibody, followed by DAB staining. This data demonstrates the use of this antibody for immunohistochemistry; clinical relevance has not been evaluated.



Confocal immunofluorescent analysis of SERPINC1 Antibody (C-term) (Cat. #TA324863) with 293 cell followed by Alexa Fluor® 488-conjugated goat anti-rabbit IgG (green). DAPI was used to stain the cell nuclear (blue).



SERPINC1 Antibody (C-term) (Cat. #TA324863) flow cytometric analysis of HepG2 cells (right histogram) compared to a negative control cell (left histogram). FITC-conjugated goat-anti-rabbit secondary antibodies were used for the analysis.