

Product datasheet for **TA324862**

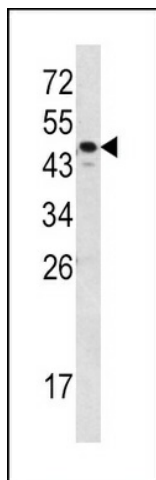
Thyroxine Binding Globulin (SERPINA7) Rabbit Polyclonal Antibody

Product data:

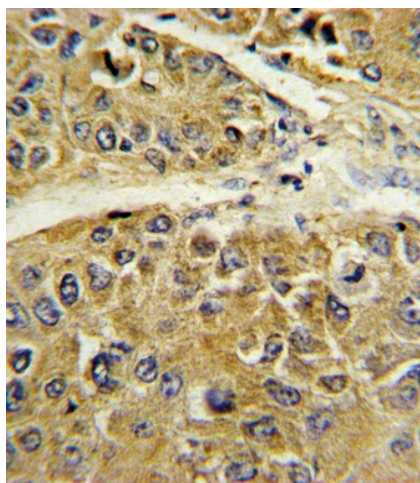
Product Type:	Primary Antibodies
Applications:	FC, IHC, WB
Recommended Dilution:	WB: 1:1000, IHC: 1:10~50, FC: 1:10~50
Reactivity:	Human
Host:	Rabbit
Isotype:	IgG
Clonality:	Polyclonal
Immunogen:	This SERPINA7 antibody is generated from rabbits immunized with a KLH conjugated synthetic peptide between 354-383 amino acids from the C-terminal region of human SERPINA7.
Formulation:	Purified polyclonal antibody supplied in PBS with 0.09% (W/V) sodium azide.
Concentration:	lot specific
Purification:	This antibody is prepared by Saturated Ammonium Sulfate (SAS) precipitation followed by dialysis against PBS.
Conjugation:	Unconjugated
Storage:	Store at -20°C as received.
Stability:	Stable for 12 months from date of receipt.
Predicted Protein Size:	46325 Da
Gene Name:	serpin family A member 7
Database Link:	NP_000345 Entrez Gene 6906 Human P05543
Synonyms:	TBG
Protein Families:	Druggable Genome, Secreted Protein



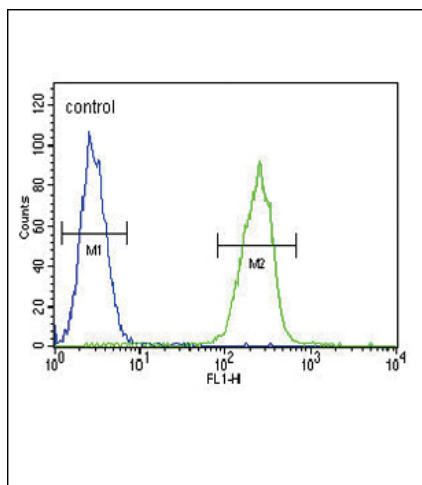
[View online »](#)

Product images:

Western blot analysis of SERPINA7 Antibody (C-term) (Cat. #TA324862) in MDA-MB231 cell line lysates (35ug/lane). SERPINA7 (arrow) was detected using the purified Pab.



Formalin-fixed and paraffin-embedded human hepatocarcinoma reacted with SERPINA7 Antibody (C-term), which was peroxidase-conjugated to the secondary antibody, followed by DAB staining. This data demonstrates the use of this antibody for immunohistochemistry; clinical relevance has not been evaluated.



SERPINA7 Antibody (C-term) (Cat. #TA324862) flow cytometric analysis of MDA-MB231 cells (right histogram) compared to a negative control cell (left histogram). FITC-conjugated goat-anti-rabbit secondary antibodies were used for the analysis.