

## Product datasheet for **TA324861**

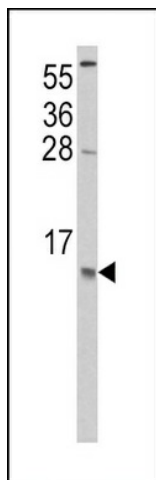
### **MCP1 (CCL2) Rabbit Polyclonal Antibody**

#### **Product data:**

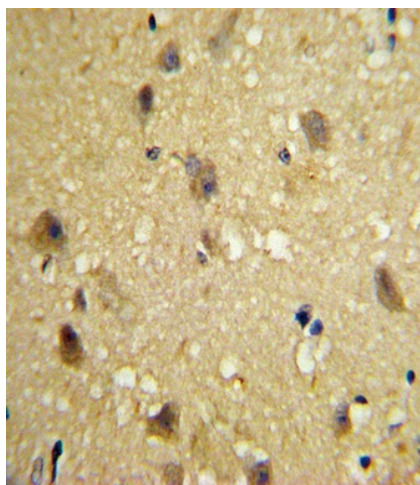
<b>Product Type:</b>	Primary Antibodies
<b>Applications:</b>	FC, IF, IHC, WB
<b>Recommended Dilution:</b>	WB: 1:1000, IHC: 1:10~50, IF: 1:10~50, FC: 1:10~50
<b>Reactivity:</b>	Human (Predicted: Monkey)
<b>Host:</b>	Rabbit
<b>Isotype:</b>	IgG
<b>Clonality:</b>	Polyclonal
<b>Immunogen:</b>	This CCL2 antibody is generated from rabbits immunized with a KLH conjugated synthetic peptide between 62-89 amino acids from the C-terminal region of human CCL2.
<b>Formulation:</b>	Purified polyclonal antibody supplied in PBS with 0.09% (W/V) sodium azide.
<b>Concentration:</b>	lot specific
<b>Purification:</b>	This antibody is prepared by Saturated Ammonium Sulfate (SAS) precipitation followed by dialysis against PBS.
<b>Conjugation:</b>	Unconjugated
<b>Storage:</b>	Store at -20°C as received.
<b>Stability:</b>	Stable for 12 months from date of receipt.
<b>Predicted Protein Size:</b>	11025 Da
<b>Gene Name:</b>	C-C motif chemokine ligand 2
<b>Database Link:</b>	<a href="#">NP_002973</a> <a href="#">Entrez Gene 574138 Monkey</a> <a href="#">Entrez Gene 6347 Human</a> <a href="#">P13500</a>
<b>Synonyms:</b>	GDGF-2; HC11; HSMCR30; MCAF; MCP-1; MCP1; SCYA2; SMC-CF
<b>Protein Families:</b>	Druggable Genome, Secreted Protein
<b>Protein Pathways:</b>	Chemokine signaling pathway, Cytokine-cytokine receptor interaction, NOD-like receptor signaling pathway



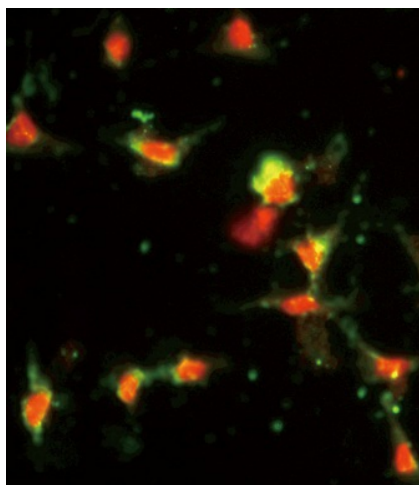
[View online »](#)

**Product images:**

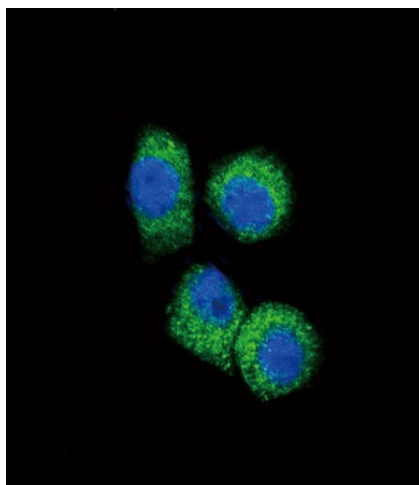
Western blot analysis of CCL2 Antibody (C-term) (Cat. #TA324861) in HeLa cell line lysates (35ug/lane). CCL2 (arrow) was detected using the purified Pab.



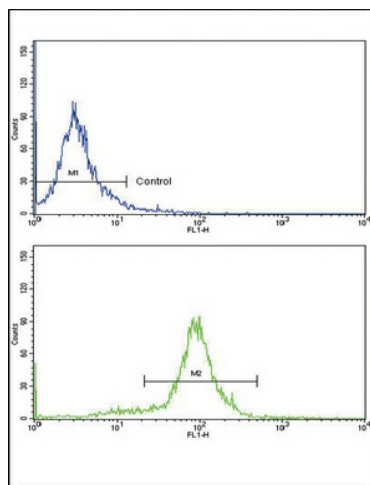
Formalin-fixed and paraffin-embedded human brain tissue with CCL2 Antibody (C-term), which was peroxidase-conjugated to the secondary antibody, followed by DAB staining. This data demonstrates the use of this antibody for immunohistochemistry; clinical relevance has not been evaluated.



Immunofluorescence analysis of CCL2 Antibody (C-term) with hela cells. 0.025 mg/ml primary antibody was followed by FITC-conjugated goat anti-rabbit IgG (whole molecule). FITC emits green fluorescence. Red counterstaining is PI.



Confocal immunofluorescent analysis of CCL2 Antibody (C-term) (Cat. #TA324861) with Hela cell followed by Alexa Fluor 488-conjugated goat anti-rabbit IgG (green). DAPI was used to stain the cell nuclear (blue).



Flow cytometric analysis of hela cells using CCL2 Antibody (C-term) (bottom histogram) compared to a negative control cell (top histogram). FITC-conjugated goat-anti-rabbit secondary antibodies were used for the analysis.