

Product datasheet for **TA324860S**

Prealbumin (TTR) Rabbit Polyclonal Antibody

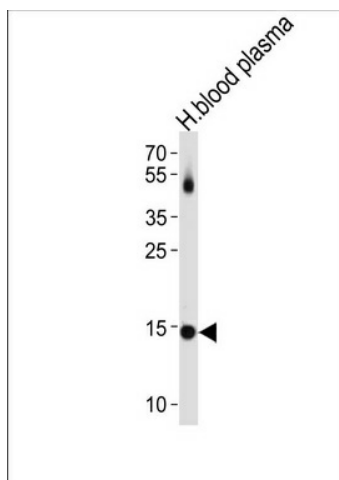
Product data:

Product Type:	Primary Antibodies
Applications:	FC, IF, IHC, WB
Recommended Dilution:	IF: 1:25, WB: 1:1000, IHC: 1:50~100, FC: 1:10~50
Reactivity:	Human (Predicted: Monkey)
Host:	Rabbit
Isotype:	IgG
Clonality:	Polyclonal
Immunogen:	This TTR antibody is generated from rabbits immunized with a KLH conjugated synthetic peptide between 71-98 amino acids from the C-terminal region of human TTR.
Formulation:	Purified polyclonal antibody supplied in PBS with 0.09% (W/V) sodium azide.
Concentration:	lot specific
Purification:	This antibody is purified through a protein A column, followed by peptide affinity purification.
Conjugation:	Unconjugated
Storage:	Store at -20°C as received.
Stability:	Stable for 12 months from date of receipt.
Predicted Protein Size:	15887 Da
Gene Name:	transthyretin
Database Link:	NP_000362 Entrez Gene 705943 Monkey Entrez Gene 7276 Human P02766
Synonyms:	CTS; CTS1; HEL111; HsT2651; PALB; TBPA
Protein Families:	ES Cell Differentiation/IPS, Secreted Protein

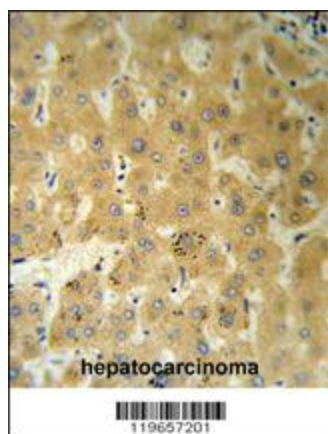


[View online »](#)

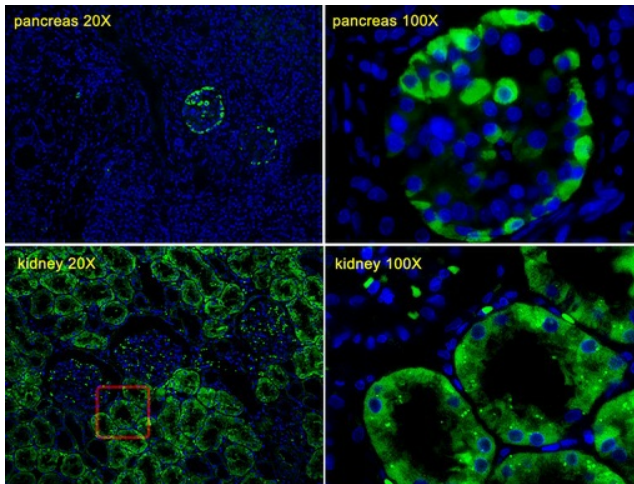
Product images:



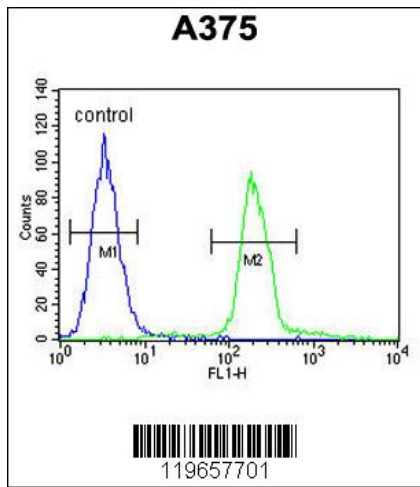
TTR Antibody (C-term) (Cat. #[TA324860]) western blot analysis in human blood plasma tissue lysates (35ug/lane). This demonstrates the TTR antibody detected the TTR protein (arrow).



TTR Antibody (C-term) (RB19657) IHC analysis in formalin fixed and paraffin embedded human hepatocarcinoma followed by peroxidase conjugation of the secondary antibody and DAB staining. This data demonstrates the use of the TTR Antibody (C-term) for immunohistochemistry. Clinical relevance has not been evaluated.



Immunofluorescent analysis of Human pancreas tissues and Human kidney tissues, using TTR Antibody (C-term) (Cat. #[TA324860]). [TA324860] was diluted at 1:25 dilution. Alexa Fluor 488-conjugated goat anti-rabbit IgG at 1:400 dilution was used as the secondary antibody (green). DAPI was used to stain the cell nuclear (blue).



TTR Antibody (C-term) (Cat. #[TA324860]) flow cytometric analysis of A375 cells (right histogram) compared to a negative control cell (left histogram). FITC-conjugated goat-anti-rabbit secondary antibodies were used for the analysis.