

Product datasheet for **TA324859S**

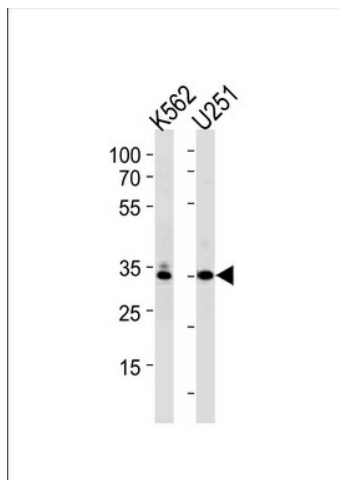
TATA binding protein (TBP) Rabbit Polyclonal Antibody

Product data:

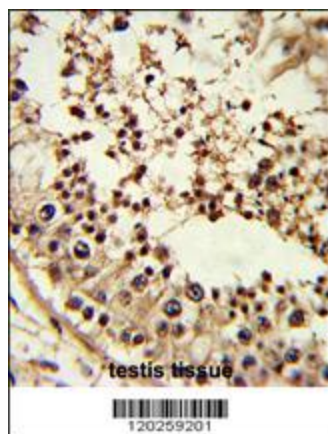
Product Type:	Primary Antibodies
Applications:	FC, IF, IHC, WB
Recommended Dilution:	WB 1:1000, IHC 1:50 - 100, IF 1:10 - 50, FC 1:10 - 50
Reactivity:	Human (Predicted: Mouse, Zebrafish, Bovine, Chicken, Monkey, Xenopus)
Host:	Rabbit
Isotype:	IgG
Clonality:	Polyclonal
Immunogen:	This TBP antibody is generated from rabbits immunized with a KLH conjugated synthetic peptide between 210-239 amino acids from the Central region of human TBP.
Formulation:	Purified polyclonal antibody supplied in PBS with 0.09% (W/V) sodium azide.
Concentration:	lot specific
Purification:	This antibody is prepared by Saturated Ammonium Sulfate (SAS) precipitation followed by dialysis against PBS.
Conjugation:	Unconjugated
Storage:	Store at -20°C as received.
Stability:	Stable for 12 months from date of receipt.
Predicted Protein Size:	37698 Da
Gene Name:	TATA-box binding protein
Database Link:	NP_003185 Entrez Gene 21374 Mouse Entrez Gene 696258 Monkey Entrez Gene 6908 Human P20226
Synonyms:	GTF2D; GTF2D1; HDL4; SCA17; TFIID
Protein Families:	Druggable Genome, Transcription Factors
Protein Pathways:	Basal transcription factors, Huntington's disease



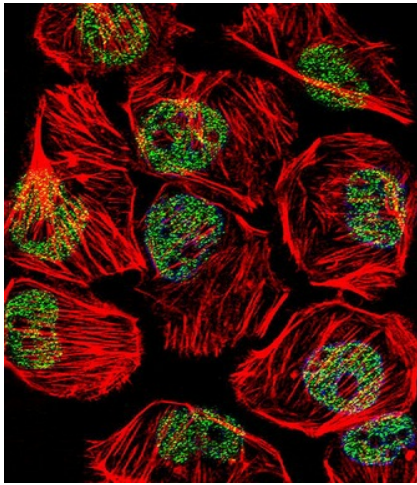
[View online »](#)

Product images:

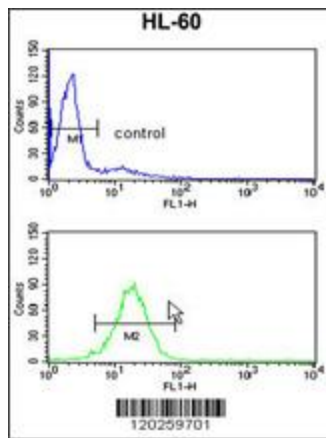
TBP Antibody (Center) (Cat. #[TA324859]) western blot analysis in K562, U251 cell line lysates (35ug/lane). This demonstrates the TBP antibody detected the TBP protein (arrow).



Formalin-fixed and paraffin-embedded human testis tissue reacted with TBP Antibody (Center), which was peroxidase-conjugated to the secondary antibody, followed by DAB staining. This data demonstrates the use of this antibody for immunohistochemistry; clinical relevance has not been evaluated.



IF image of U251 cell stained with TBP Antibody (Center) (Cat#[TA324859]). U251 cells were incubated with TBP primary antibody (1:25, 1 h at 37°C). For secondary antibody, Alexa Fluor® 488 conjugated donkey anti-rabbit antibody (green) was used (1:400). Cytoplasmic actin was counterstained with Alexa Fluor® 555 (red) conjugated Phalloidin (7 units/ml). Nuclei were counterstained with DAPI (blue). TBP immunoreactivity is localized to Nucleus significantly.



TBP Antibody (Center) (Cat. #[TA324859]) flow cytometry analysis of HL-60 cells (bottom histogram) compared to a negative control cell (top histogram). FITC-conjugated goat-anti-rabbit secondary antibodies were used for the analysis.