

## Product datasheet for **TA324858**

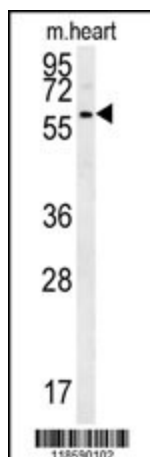
### PRELP Rabbit Polyclonal Antibody

#### Product data:

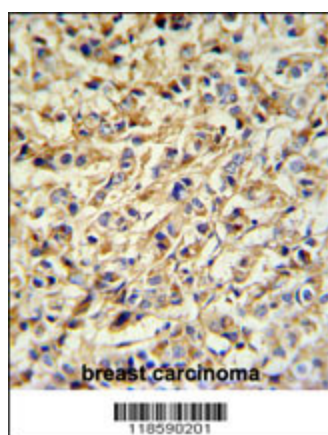
Product Type:	Primary Antibodies
Applications:	IHC, WB
Recommended Dilution:	WB: 1:1000, IHC: 1:50~100
Reactivity:	Human
Host:	Rabbit
Isotype:	IgG
Clonality:	Polyclonal
Immunogen:	This PRELP antibody is generated from rabbits immunized with a KLH conjugated synthetic peptide between 119-148 amino acids from the Central region of human PRELP.
Formulation:	Purified polyclonal antibody supplied in PBS with 0.09% (W/V) sodium azide.
Concentration:	lot specific
Purification:	This antibody is purified through a protein A column, followed by peptide affinity purification.
Conjugation:	Unconjugated
Storage:	Store at -20°C as received.
Stability:	Stable for 12 months from date of receipt.
Predicted Protein Size:	43810 Da
Gene Name:	proline/arginine-rich end leucine-rich repeat protein
Database Link:	<a href="#">NP_002716</a> <a href="#">Entrez Gene 5549 Human</a> <a href="#">P51888</a>
Synonyms:	MST161; MSTP161; SLRR2A
Protein Families:	Secreted Protein



[View online »](#)

**Product images:**

PRELP Antibody (Center) (Cat. #TA324858) western blot analysis in mouse heart tissue lysates (15ug/lane). This demonstrates the PRELP antibody detected PRELP protein (arrow).



PRELP Antibody (Center) (Cat. #TA324858) IHC analysis in formalin fixed and paraffin embedded breast carcinoma followed by peroxidase conjugation of the secondary antibody and DAB staining. This data demonstrates the use of the PRELP Antibody (Center) for immunohistochemistry. Clinical relevance has not been evaluated.