

Product datasheet for **TA324856S**

MTA2 Rabbit Polyclonal Antibody

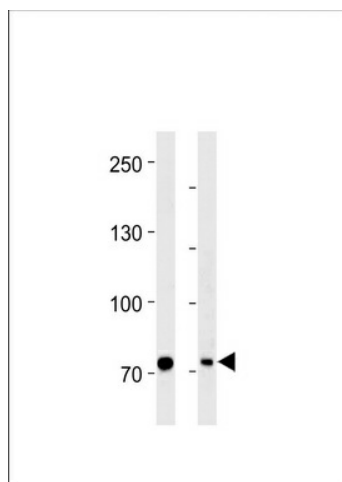
Product data:

Product Type:	Primary Antibodies
Applications:	FC, IHC, WB
Recommended Dilution:	WB: 1:1000, IHC: 1:50~100, FC: 1:10~50
Reactivity:	Human, Mouse
Host:	Rabbit
Isotype:	IgG
Clonality:	Polyclonal
Immunogen:	This PID/MTA2 antibody is generated from rabbits immunized with a KLH conjugated synthetic peptide between 516-544 amino acids from the C-terminal region of human PID/MTA2.
Formulation:	Purified polyclonal antibody supplied in PBS with 0.09% (W/V) sodium azide.
Concentration:	lot specific
Purification:	This antibody is prepared by Saturated Ammonium Sulfate (SAS) precipitation followed by dialysis against PBS.
Conjugation:	Unconjugated
Storage:	Store at -20°C as received.
Stability:	Stable for 12 months from date of receipt.
Predicted Protein Size:	75023 Da
Gene Name:	metastasis associated 1 family member 2
Database Link:	NP_004730 Entrez Gene 23942 Mouse Entrez Gene 9219 Human O94776
Synonyms:	MTA1L1; PID
Protein Families:	Druggable Genome, Transcription Factors

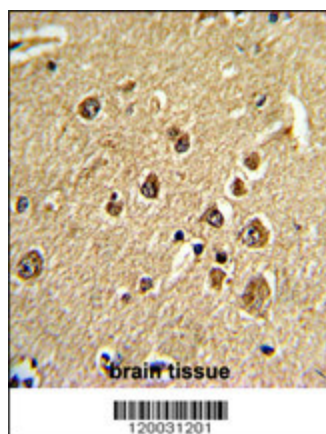


[View online »](#)

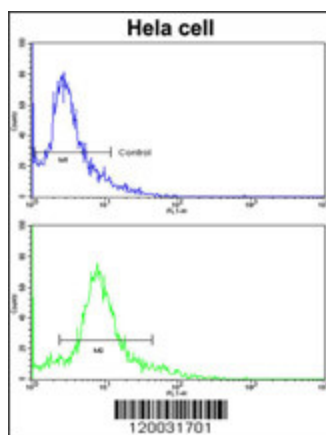
Product images:



PID/MTA2 Antibody (C-term) (Cat. #TA324856]) western blot analysis in HeLa cell line and mouse brain tissue lysates (35ug/lane). This demonstrates the PID/MTA2 antibody detected the PID/MTA2 protein (arrow).



Formalin-fixed and paraffin-embedded human brain tissue reacted with PID/MTA2 Antibody (C-term), which was peroxidase-conjugated to the secondary antibody, followed by DAB staining. This data demonstrates the use of this antibody for immunohistochemistry; clinical relevance has not been evaluated.



Flow cytometric analysis of HeLa cells using PID/MTA2 Antibody (C-term) (bottom histogram) compared to a negative control cell (top histogram). FITC-conjugated goat-anti-rabbit secondary antibodies were used for the analysis.