

## Product datasheet for **TA324855**

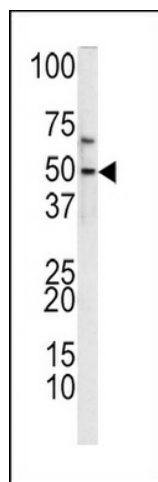
### FKLF / KLF11 (KLF11) Rabbit Polyclonal Antibody

#### Product data:

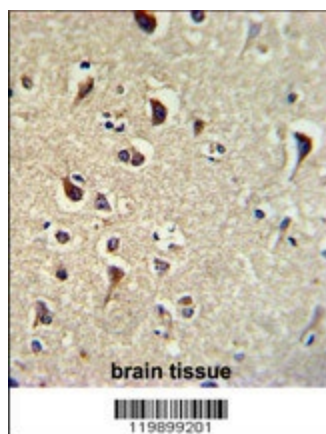
Product Type:	Primary Antibodies
Applications:	FC, IF, IHC, WB
Recommended Dilution:	WB: 1:1000, IHC: 1:50~100, FC: 1:10~50, IF: 1:10~50
Reactivity:	Human (Predicted: Mouse)
Host:	Rabbit
Isotype:	IgG
Clonality:	Polyclonal
Immunogen:	This TIEG2 antibody is generated from rabbits immunized with a KLH conjugated synthetic peptide between 7-36 amino acids from the N-terminal region of human TIEG2.
Formulation:	Purified polyclonal antibody supplied in PBS with 0.09% (W/V) sodium azide.
Concentration:	lot specific
Purification:	This antibody is prepared by Saturated Ammonium Sulfate (SAS) precipitation followed by dialysis against PBS.
Conjugation:	Unconjugated
Storage:	Store at -20°C as received.
Stability:	Stable for 12 months from date of receipt.
Predicted Protein Size:	55139 Da
Gene Name:	Kruppel-like factor 11
Database Link:	<a href="#">NP_003588</a> <a href="#">Entrez Gene 194655 Mouse</a> <a href="#">Entrez Gene 8462 Human</a> <a href="#">O14901</a>
Synonyms:	FKLF; FKLF1; MODY7; TIEG2; Tieg3
Protein Families:	Transcription Factors



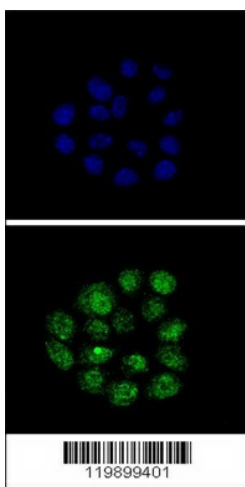
[View online »](#)

**Product images:**

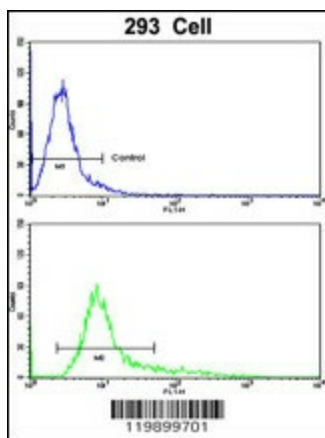
Western blot analysis of TIEG2 antibody (N-term) (Cat. #TA324855) in K562 cell line lysates (35ug/lane). TIEG2 (arrow) was detected using the purified Pab.



Formalin-fixed and paraffin-embedded human brain tissue reacted with TIEG2 Antibody (N-term), which was peroxidase-conjugated to the secondary antibody, followed by DAB staining. This data demonstrates the use of this antibody for immunohistochemistry; clinical relevance has not been evaluated.



Confocal immunofluorescent analysis of TIEG2 Antibody (N-term) (Cat. #TA324855) with HeLa cell followed by Alexa Fluor® 488-conjugated goat anti-rabbit IgG (green). DAPI was used to stain the cell nuclear (blue).



Flow cytometric analysis of 293 cells using TIEG2 Antibody (N-term) (bottom histogram) compared to a negative control cell (top histogram). FITC-conjugated goat-anti-rabbit secondary antibodies were used for the analysis.