

## Product datasheet for **TA324854S**

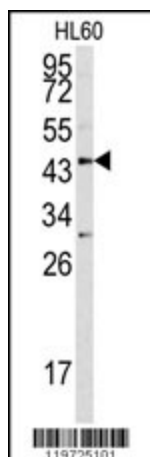
### Asporin (ASPIN) Rabbit Polyclonal Antibody

#### Product data:

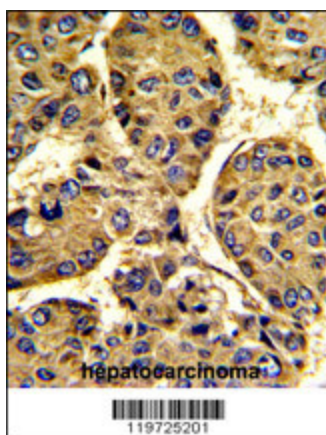
Product Type:	Primary Antibodies
Applications:	IF, IHC, WB
Recommended Dilution:	WB: 1:1000, IHC: 1:50~100, IF: 1:10~50
Reactivity:	Human
Host:	Rabbit
Isotype:	IgG
Clonality:	Polyclonal
Immunogen:	This ASPIN antibody is generated from rabbits immunized with a KLH conjugated synthetic peptide between 242-269 amino acids from the Central region of human ASPIN.
Formulation:	Purified polyclonal antibody supplied in PBS with 0.09% (W/V) sodium azide.
Concentration:	lot specific
Purification:	This antibody is prepared by Saturated Ammonium Sulfate (SAS) precipitation followed by dialysis against PBS.
Conjugation:	Unconjugated
Storage:	Store at -20°C as received.
Stability:	Stable for 12 months from date of receipt.
Predicted Protein Size:	43417 Da
Gene Name:	asporin
Database Link:	<a href="#">NP_060150</a> <a href="#">Entrez Gene 54829 Human</a> <a href="#">Q9BXN1</a>
Synonyms:	OS3; PLAP-1; PLAP1; SLRR1C
Protein Families:	Secreted Protein



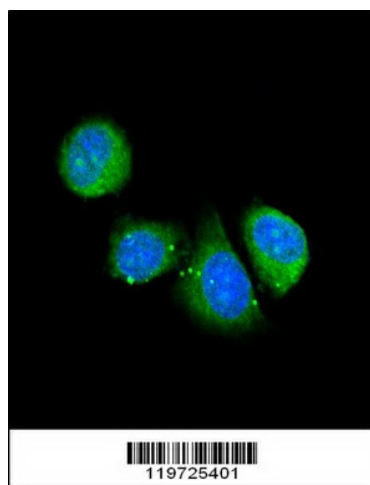
[View online »](#)

**Product images:**

Western blot analysis of ASPN antibody (Center) (Cat. #[TA324854]) in HL60 cell line lysates (35ug/lane). ASPN (arrow) was detected using the purified Pab.



Formalin-fixed and paraffin-embedded human hepatocarcinoma with ASPN Antibody (Center), which was peroxidase-conjugated to the secondary antibody, followed by DAB staining. This data demonstrates the use of this antibody for immunohistochemistry; clinical relevance has not been evaluated.



Confocal immunofluorescent analysis of ASPN Antibody (Center) (Cat. #[TA324854]) with 293 cell followed by Alexa Fluor<sup>®</sup> 488-conjugated goat anti-rabbit IgG (green). DAPI was used to stain the cell nuclear (blue).