

Product datasheet for **TA324853S**

WNT10B Rabbit Polyclonal Antibody

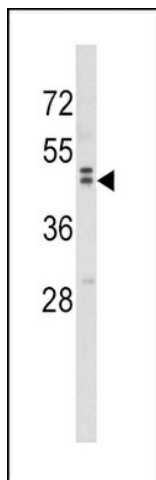
Product data:

| | |
|-------------------------|---|
| Product Type: | Primary Antibodies |
| Applications: | FC, IHC, WB |
| Recommended Dilution: | WB: 1:1000, IHC: 1:10~50, FC: 1:10~50 |
| Reactivity: | Human, Mouse |
| Host: | Rabbit |
| Isotype: | IgG |
| Clonality: | Polyclonal |
| Immunogen: | This WNT10B antibody is generated from rabbits immunized with a KLH conjugated synthetic peptide between 193-222 amino acids from the Central region of human WNT10B. |
| Formulation: | Purified polyclonal antibody supplied in PBS with 0.09% (W/V) sodium azide. |
| Concentration: | lot specific |
| Purification: | This antibody is prepared by Saturated Ammonium Sulfate (SAS) precipitation followed by dialysis against PBS. |
| Conjugation: | Unconjugated |
| Storage: | Store at -20°C as received. |
| Stability: | Stable for 12 months from date of receipt. |
| Predicted Protein Size: | 43000 Da |
| Gene Name: | Wnt family member 10B |
| Database Link: | NP_003385 Entrez Gene 22410 Mouse Entrez Gene 7480 Human O00744 |
| Synonyms: | SHFM6; WNT-12 |
| Protein Families: | Druggable Genome, Secreted Protein |
| Protein Pathways: | Basal cell carcinoma, Hedgehog signaling pathway, Melanogenesis, Pathways in cancer, Wnt signaling pathway |

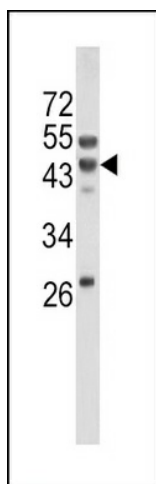


[View online »](#)

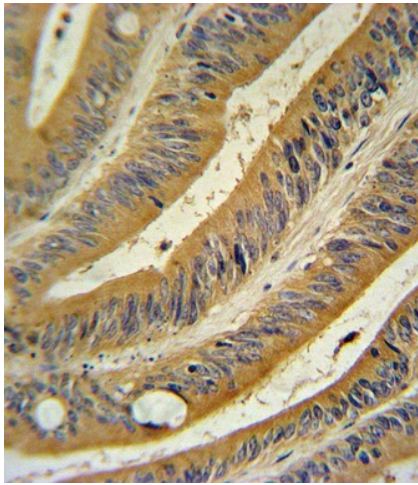
Product images:



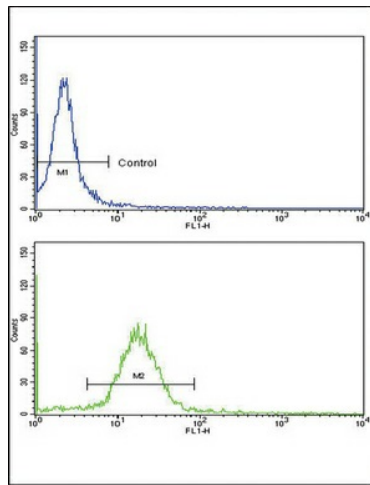
Western blot analysis of WNT10B Antibody (Center) (Cat. #[TA324853]) in MDA-MB231 cell line lysates (35ug/lane). WNT10B (arrow) was detected using the purified Pab.



Western blot analysis of WNT10B Antibody (Center) (Cat. #[TA324853]) in mouse liver tissue lysates (35ug/lane). WNT10B (arrow) was detected using the purified Pab.



WNT10B Antibody (Center) (Cat. #[TA324853]) immunohistochemistry analysis in formalin fixed and paraffin embedded human colon carcinoma followed by peroxidase conjugation of the secondary antibody and DAB staining. This data demonstrates the use of the WNT10B Antibody (Center) for immunohistochemistry. Clinical relevance has not been evaluated.



Flow cytometric analysis of MDA-231 cells using WNT10B Antibody (Center) (bottom histogram) compared to a negative control cell (top histogram). FITC-conjugated goat-anti-rabbit secondary antibodies were used for the analysis.