

## Product datasheet for **TA324852**

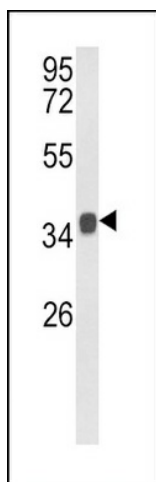
### KLF6 Rabbit Polyclonal Antibody

#### Product data:

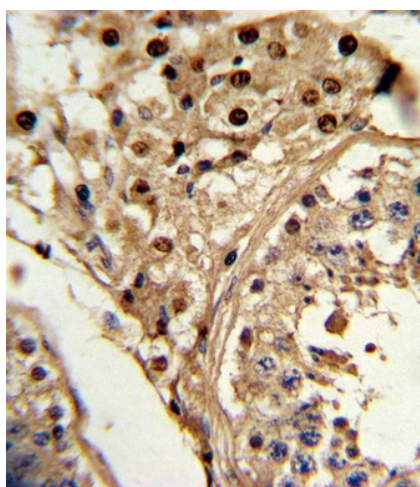
Product Type:	Primary Antibodies
Applications:	FC, IF, IHC, WB
Recommended Dilution:	WB: 1:1000, IHC: 1:10~50, FC: 1:10~50, IF: 1:10~50
Reactivity:	Human, Mouse
Host:	Rabbit
Isotype:	IgG
Clonality:	Polyclonal
Immunogen:	This KLF6 antibody is generated from rabbits immunized with a KLH conjugated synthetic peptide between 159-186 amino acids from the C-terminal region of human KLF6.
Formulation:	Purified polyclonal antibody supplied in PBS with 0.09% (W/V) sodium azide.
Concentration:	lot specific
Purification:	This antibody is prepared by Saturated Ammonium Sulfate (SAS) precipitation followed by dialysis against PBS.
Conjugation:	Unconjugated
Storage:	Store at -20°C as received.
Stability:	Stable for 12 months from date of receipt.
Predicted Protein Size:	31865 Da
Gene Name:	Kruppel-like factor 6
Database Link:	<a href="#">NP_001291</a> <a href="#">Entrez Gene 23849 Mouse</a> <a href="#">Entrez Gene 1316 Human</a> <a href="#">Q99612</a>
Synonyms:	BCD1; CBA1; COPEB; CPBP; GBF; PAC1; ST12; ZF9
Protein Families:	Druggable Genome, ES Cell Differentiation/IPS, Transcription Factors



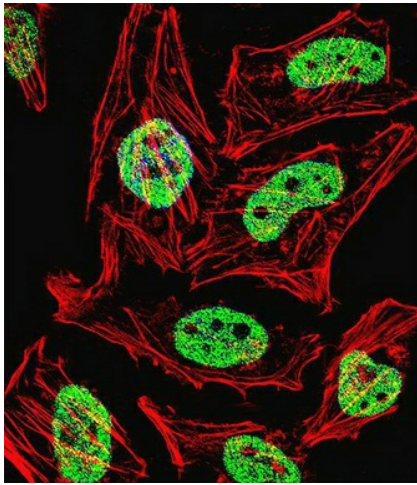
[View online »](#)

**Product images:**

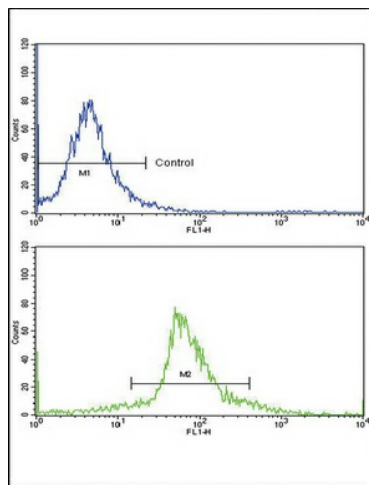
Western blot analysis of KLF6 Antibody (C-term) (Cat. #TA324852) in mouse stomach tissue lysates (35ug/lane). KLF6 (arrow) was detected using the purified Pab.



Formalin-fixed and paraffin-embedded human testis tissue reacted with KLF6 Antibody (C-term), which was peroxidase-conjugated to the secondary antibody, followed by DAB staining. This data demonstrates the use of this antibody for immunohistochemistry; clinical relevance has not been evaluated.



IF image of HeLa cell stained with KLF6 Antibody (C-term) (Cat#TA324852). HeLa cells were incubated with KLF6 primary antibody (1:25, 1 h at 37°C). For secondary antibody, Alexa Fluor® 488 conjugated donkey anti-rabbit antibody (green) was used (1:400). Cytoplasmic actin was counterstained with Alexa Fluor® 555 (red) conjugated Phalloidin (7 units/ml). Nuclei were counterstained with DAPI (blue). KLF6 immunoreactivity is localized to Nucleus significantly.



Flow cytometric analysis of wild cells using KLF6 Antibody (C-term) (bottom histogram) compared to a negative control cell (top histogram). FITC-conjugated goat-anti-rabbit secondary antibodies were used for the analysis.