

Product datasheet for **TA324851**

alpha 1 Catenin (CTNNA1) Rabbit Polyclonal Antibody

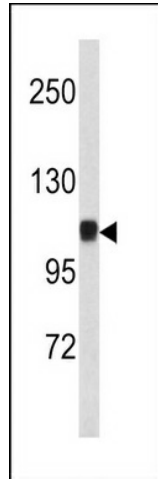
Product data:

Product Type:	Primary Antibodies
Applications:	FC, IHC, WB
Recommended Dilution:	WB: 1:1000, IHC: 1:50~100, FC: 1:10~50
Reactivity:	Human, Mouse (Predicted: Bovine, Rabbit)
Host:	Rabbit
Isotype:	IgG
Clonality:	Polyclonal
Immunogen:	This CTNA1 antibody is generated from rabbits immunized with a KLH conjugated synthetic peptide between 30-59 amino acids from the N-terminal region of human CTNA1.
Formulation:	Purified polyclonal antibody supplied in PBS with 0.09% (W/V) sodium azide.
Concentration:	lot specific
Purification:	This antibody is prepared by Saturated Ammonium Sulfate (SAS) precipitation followed by dialysis against PBS.
Conjugation:	Unconjugated
Storage:	Store at -20°C as received.
Stability:	Stable for 12 months from date of receipt.
Predicted Protein Size:	100071 Da
Gene Name:	catenin alpha 1
Database Link:	NP_001894 Entrez Gene 12385 Mouse Entrez Gene 1495 Human P35221
Synonyms:	CAP102; MDPT2
Protein Families:	Druggable Genome
Protein Pathways:	Adherens junction, Arrhythmogenic right ventricular cardiomyopathy (ARVC), Endometrial cancer, Leukocyte transendothelial migration, Pathways in cancer, Tight junction

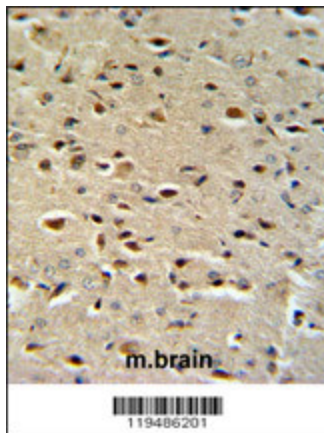


[View online »](#)

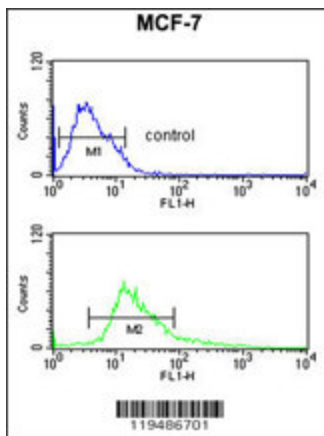
Product images:



Western blot analysis of CTNA1 antibody (N-term) (Cat. #TA324851) in mouse bladder tissue lysates (35ug/lane). CTNA1 (arrow) was detected using the purified Pab.



CTNA1 Antibody (N-term) (Cat. #TA324851) IHC analysis in formalin fixed and paraffin embedded mouse brain tissue followed by peroxidase conjugation of the secondary antibody and DAB staining. This data demonstrates the use of the CTNA1 Antibody (N-term) for immunohistochemistry. Clinical relevance has not been evaluated.



CTNA1 Antibody (N-term) (Cat. #TA324851) flow cytometric analysis of MCF-7 cells (bottom histogram) compared to a negative control cell (top histogram). FITC-conjugated goat-anti-rabbit secondary antibodies were used for the analysis.