

## Product datasheet for **TA324850S**

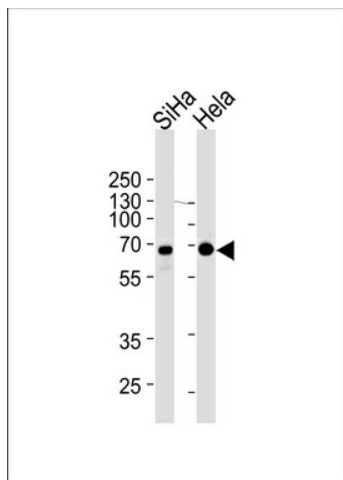
### NLK Mouse Monoclonal Antibody [Clone ID: 1146CT24.2.1]

#### Product data:

Product Type:	Primary Antibodies
Clone Name:	1146CT24.2.1
Applications:	WB
Recommended Dilution:	WB: 1:1000
Reactivity:	Human
Host:	Mouse
Isotype:	IgG2a
Clonality:	Monoclonal
Immunogen:	Purified His-tagged NLK protein was used to produced this monoclonal antibody.
Formulation:	Purified monoclonal antibody supplied in PBS with 0.09% (W/V) sodium azide.
Concentration:	lot specific
Purification:	This antibody is purified through a protein G column, followed by dialysis against PBS.
Conjugation:	Unconjugated
Storage:	Store at -20°C as received.
Stability:	Stable for 12 months from date of receipt.
Predicted Protein Size:	58283 Da
Gene Name:	nemo like kinase
Database Link:	<a href="#">NP_057315</a> <a href="#">Entrez Gene 51701 Human</a> <a href="#">Q9UBE8</a>
Synonyms:	DKFZp761G1211; FLJ21033
Protein Families:	Druggable Genome, Protein Kinase, Transcription Factors
Protein Pathways:	Adherens junction, MAPK signaling pathway, Wnt signaling pathway



[View online »](#)

**Product images:**

NLK Antibody (Cat. #[TA324850]) western blot analysis in SiHa, HeLa cell line lysates (35ug/lane). This demonstrates the NLK antibody detected the NLK protein (arrow).