

## Product datasheet for **TA324847S**

### Non Neuronal Enolase (ENO1) Rabbit Polyclonal Antibody

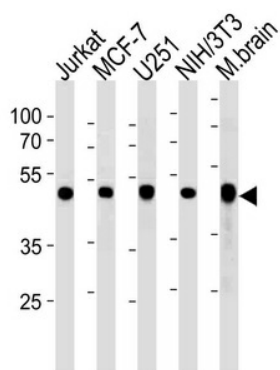
#### Product data:

|                         |   |
|-------------------------|---|
| Product Type:           | Primary Antibodies  |
| Applications:           | FC, IF, IHC, WB   |
| Recommended Dilution:   | WB: 1:1000, IHC: 1:10~50, FC: 1:10~50, IF: 1:10~50  |
| Reactivity:             | Human, Mouse (Predicted: Rat, Bovine, Chicken, Monkey, Xenopus)   |
| Host:                   | Rabbit  |
| Isotype:                | IgG   |
| Clonality:              | Polyclonal  |
| Immunogen:              | This ENO1 antibody is generated from rabbits immunized with a KLH conjugated synthetic peptide between 178-205 amino acids from the Central region of human ENO1.   |
| Formulation:            | Purified polyclonal antibody supplied in PBS with 0.09% (W/V) sodium azide.   |
| Concentration:          | lot specific  |
| Purification:           | This antibody is prepared by Saturated Ammonium Sulfate (SAS) precipitation followed by dialysis against PBS.   |
| Conjugation:            | Unconjugated  |
| Storage:                | Store at -20°C as received.   |
| Stability:              | Stable for 12 months from date of receipt.  |
| Predicted Protein Size: | 47169 Da  |
| Gene Name:              | enolase 1   |
| Database Link:          | <a href="#">NP_001419</a><br><a href="#">Entrez Gene 13806 Mouse</a> <a href="#">Entrez Gene 24333 Rat</a> <a href="#">Entrez Gene 709378 Monkey</a> <a href="#">Entrez Gene 2023 Human</a><br><a href="#">P06733</a> |
| Synonyms:               | ENO1L1; MPB1; NNE; PPH  |
| Protein Families:       | Druggable Genome, Transcription Factors   |
| Protein Pathways:       | Glycolysis / Gluconeogenesis, Metabolic pathways, RNA degradation   |

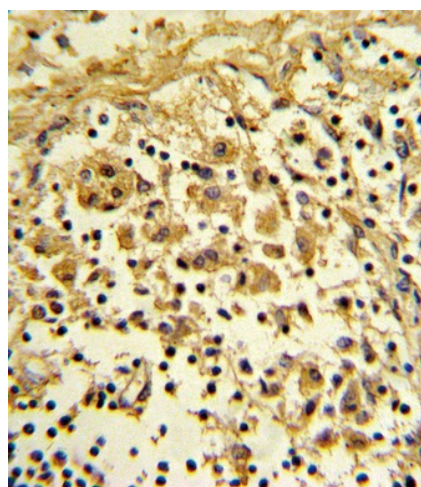


[View online »](#)

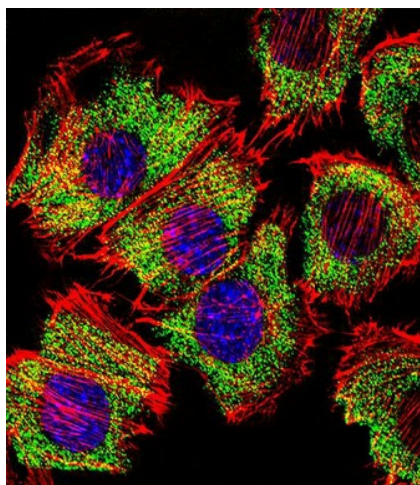
Product images:



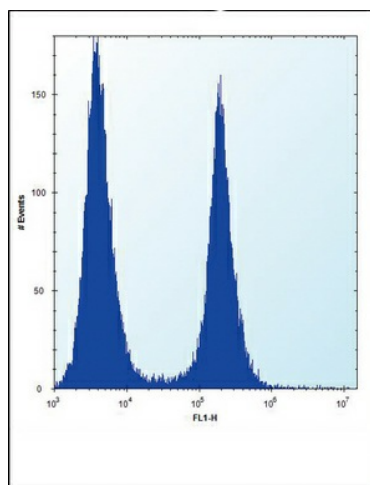
ENO1 Antibody (Center) (Cat. #[TA324847]) western blot analysis in Jurkat, MCF-7, U251, mouse NIH/3T3 cell line and mouse brain tissue lysates (35ug/lane). This demonstrates the ENO1 antibody detected the ENO1 protein (arrow).



Formalin-fixed and paraffin-embedded human lymph reacted with ENO1 Antibody (Center), which was peroxidase-conjugated to the secondary antibody, followed by DAB staining. This data demonstrates the use of this antibody for immunohistochemistry; clinical relevance has not been evaluated.



IF image of C2C12 cell stained with ENO1 Antibody (Center) (Cat#[TA324847]).C2C12 cells were incubated with ENO1 primary antibody (1:25, 1 h at 37°C). For secondary antibody, Alexa Fluor® 488 conjugated donkey anti-rabbit antibody (green) was used (1:400).Cytoplasmic actin was counterstained with Alexa Fluor® 555 (red) conjugated Phalloidin (7 units/ml). Nuclei were counterstained with DAPI (blue). ENO1 immunoreactivity is localized to Cytoplasm significantly.



ENO1 Antibody (Center) (Cat. #[TA324847]) flow cytometric analysis of HeLa cells (right histogram) compared to a negative control cell (left histogram).FITC-conjugated donkey-anti-rabbit secondary antibodies were used for the analysis.