

## Product datasheet for **TA324846S**

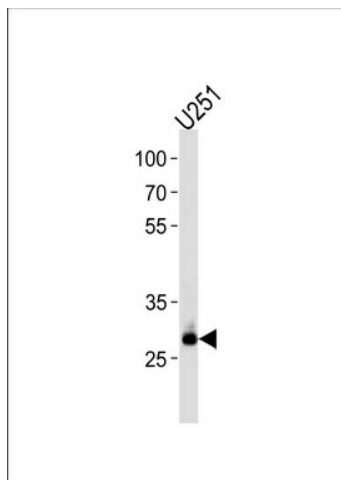
### CNOT8 Rabbit Polyclonal Antibody

#### Product data:

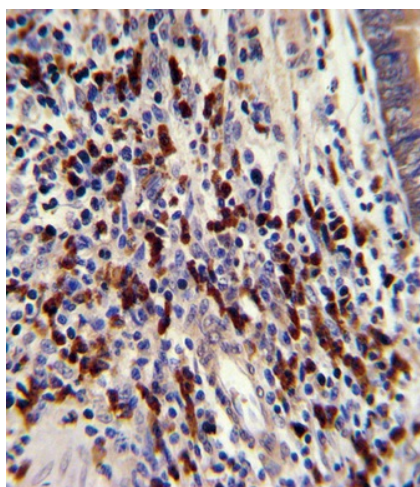
Product Type:	Primary Antibodies
Applications:	FC, IF, IHC, WB
Recommended Dilution:	WB: 1:1000, IF: 1:10~50, IHC: 1:10~50, FC: 1:10~50
Reactivity:	Human (Predicted: Mouse)
Host:	Rabbit
Isotype:	IgG
Clonality:	Polyclonal
Immunogen:	This CNOT8 antibody is generated from rabbits immunized with a KLH conjugated synthetic peptide between 227-255 amino acids from the C-terminal region of human CNOT8.
Formulation:	Purified polyclonal antibody supplied in PBS with 0.09% (W/V) sodium azide.
Concentration:	lot specific
Purification:	This antibody is purified through a protein A column, followed by peptide affinity purification.
Conjugation:	Unconjugated
Storage:	Store at -20°C as received.
Stability:	Stable for 12 months from date of receipt.
Predicted Protein Size:	33540 Da
Gene Name:	CCR4-NOT transcription complex subunit 8
Database Link:	<a href="#">NP_004770</a> <a href="#">Entrez Gene 69125 Mouse</a> <a href="#">Entrez Gene 9337 Human</a> <a href="#">Q9UFF9</a>
Synonyms:	CAF1; Caf1b; CALIF; hCAF1; POP2
Protein Families:	Transcription Factors
Protein Pathways:	RNA degradation



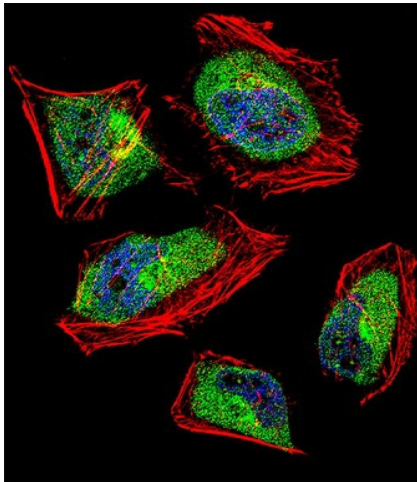
[View online »](#)

**Product images:**

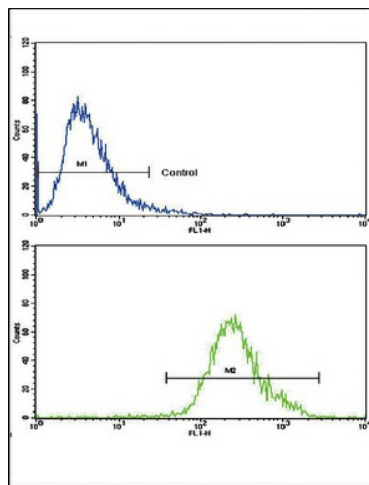
CNOT8 Antibody (C-term) (Cat. #[TA324846]) western blot analysis in U251 cell line lysates (35ug/lane). This demonstrates the CNOT8 antibody detected the CNOT8 protein (arrow).



Formalin-fixed and paraffin-embedded human colon carcinoma with CNOT8 Antibody (C-term), which was peroxidase-conjugated to the secondary antibody, followed by DAB staining. This data demonstrates the use of this antibody for immunohistochemistry; clinical relevance has not been evaluated.



IF image of HeLa cell stained with CNOT8 Antibody (C-term) (Cat#[TA324846]). HeLa cells were incubated with CNOT8 primary antibody (1:25, 1 h at 37°C). For secondary antibody, Alexa Fluor® 488 conjugated donkey anti-rabbit antibody (green) was used (1:400). Cytoplasmic actin was counterstained with Alexa Fluor® 555 (red) conjugated Phalloidin (7 units/ml). Nuclei were counterstained with DAPI (blue). CNOT8 immunoreactivity is localized to Cytoplasm significantly and Nucleus weakly.



Flow cytometric analysis of CEM cells using CNOT8 Antibody (C-term) (bottom histogram) compared to a negative control cell (top histogram). FITC-conjugated goat-anti-rabbit secondary antibodies were used for the analysis.