

Product datasheet for **TA324845S**

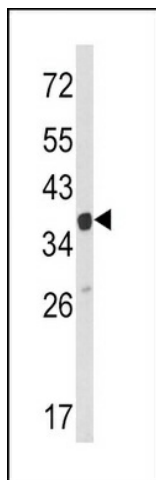
ARPC1A Rabbit Polyclonal Antibody

Product data:

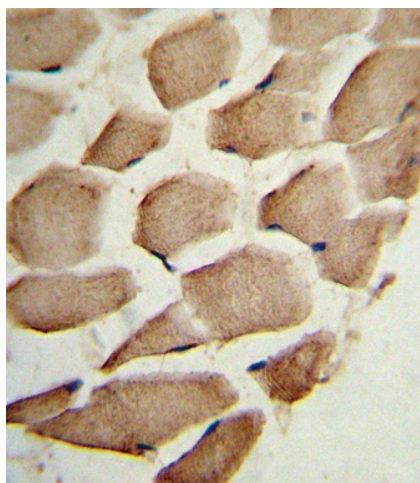
Product Type:	Primary Antibodies
Applications:	FC, IF, IHC, WB
Recommended Dilution:	WB: 1:1000, IHC: 1:10~50, IF: 1:10~50, FC: 1:10~50
Reactivity:	Human (Predicted: Mouse, Rat, Bovine)
Host:	Rabbit
Isotype:	IgG
Clonality:	Polyclonal
Immunogen:	This ARPC1A antibody is generated from rabbits immunized with a KLH conjugated synthetic peptide between 286-315 amino acids from the C-terminal region of human ARPC1A.
Formulation:	Purified polyclonal antibody supplied in PBS with 0.09% (W/V) sodium azide.
Concentration:	lot specific
Purification:	This antibody is prepared by Saturated Ammonium Sulfate (SAS) precipitation followed by dialysis against PBS.
Conjugation:	Unconjugated
Storage:	Store at -20°C as received.
Stability:	Stable for 12 months from date of receipt.
Predicted Protein Size:	41569 Da
Gene Name:	actin related protein 2/3 complex subunit 1A
Database Link:	NP_001177925 Entrez Gene 56443 Mouse Entrez Gene 81824 Rat Entrez Gene 10552 Human Q92747
Synonyms:	Arc40; HEL-68; HEL-S-307; SOP2Hs; SOP2L
Protein Pathways:	Fc gamma R-mediated phagocytosis, Pathogenic Escherichia coli infection, Regulation of actin cytoskeleton



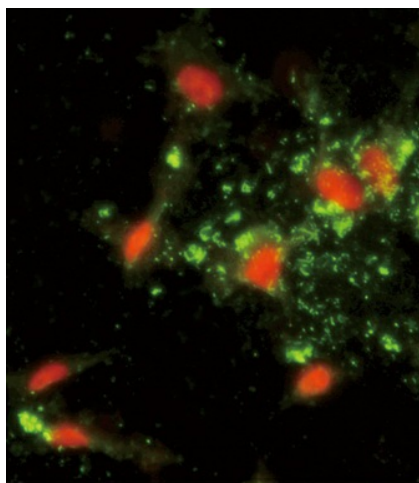
[View online »](#)

Product images:

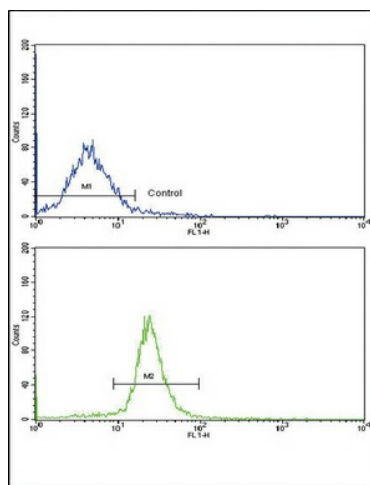
Western blot analysis of ARPC1A Antibody (C-term) (Cat. #[TA324845]) in HeLa cell line lysates (35ug/lane). ARPC1A (arrow) was detected using the purified Pab.



Formalin-fixed and paraffin-embedded human skeletal muscle reacted with ARPC1A Antibody (C-term), which was peroxidase-conjugated to the secondary antibody, followed by DAB staining. This data demonstrates the use of this antibody for immunohistochemistry; clinical relevance has not been evaluated.



Immunofluorescence analysis of ARPC1A Antibody (C-term) with hela cells. 0.025 mg/ml primary antibody was followed by FITC-conjugated goat anti-rabbit IgG (whole molecule). FITC emits green fluorescence. Red counterstaining is PI.



Flow cytometric analysis of WiDr cells using ARPC1A Antibody (C-term) (bottom histogram) compared to a negative control cell (top histogram). FITC-conjugated goat-anti-rabbit secondary antibodies were used for the analysis.