

## Product datasheet for **TA324844S**

### Endothelin A Receptor (EDNRA) Rabbit Polyclonal Antibody

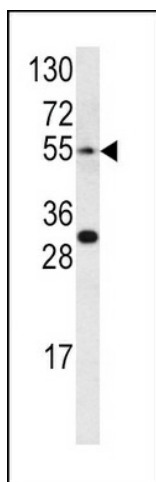
#### Product data:

Product Type:	Primary Antibodies
Applications:	FC, IF, WB
Recommended Dilution:	WB: 1:1000, IF: 1:10~50, FC: 1:10~50
Reactivity:	Human (Predicted: Mouse, Rat)
Host:	Rabbit
Isotype:	IgG
Clonality:	Polyclonal
Immunogen:	This EDNRA antibody is generated from rabbits immunized with a KLH conjugated synthetic peptide between 125-154 amino acids from the Central region of human EDNRA.
Formulation:	Purified polyclonal antibody supplied in PBS with 0.09% (W/V) sodium azide.
Concentration:	lot specific
Purification:	This antibody is prepared by Saturated Ammonium Sulfate (SAS) precipitation followed by dialysis against PBS.
Conjugation:	Unconjugated
Storage:	Store at -20°C as received.
Stability:	Stable for 12 months from date of receipt.
Predicted Protein Size:	48722 Da
Gene Name:	endothelin receptor type A
Database Link:	<a href="#">NP_001159527</a> <a href="#">Entrez Gene 13617 Mouse</a> <a href="#">Entrez Gene 24326 Rat</a> <a href="#">Entrez Gene 1909 Human</a> <a href="#">P25101</a>
Synonyms:	ET-A; ETA; ETA-R; ETAR; ETRA; hET-AR
Protein Families:	Druggable Genome, GPCR, Transmembrane
Protein Pathways:	Calcium signaling pathway, Neuroactive ligand-receptor interaction, Vascular smooth muscle contraction

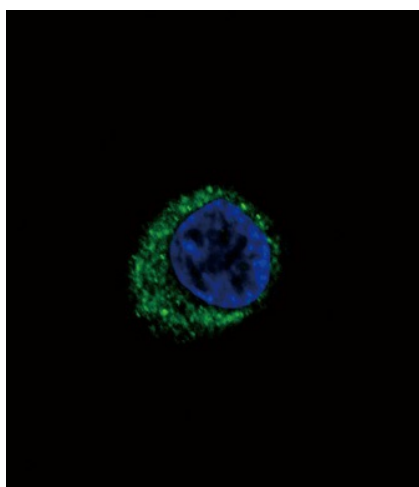


[View online »](#)

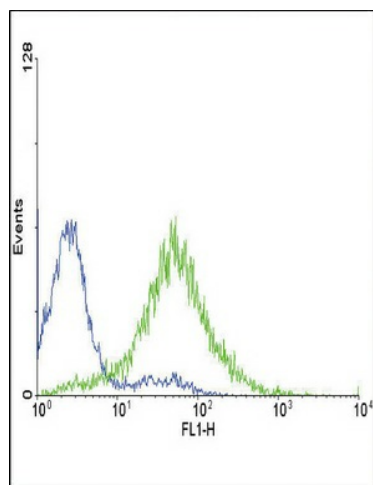
## Product images:



Western blot analysis of EDNRA antibody (Center) (Cat.# [TA324844]) in CEM cell line lysates (35ug/lane). EDNRA (arrow) was detected using the purified Pab.



Confocal immunofluorescent analysis of EDNRA Antibody (Center) (Cat#[TA324844]) with HepG2 cell followed by Alexa Fluor 488-conjugated goat anti-rabbit IgG (green). DAPI was used to stain the cell nuclear (blue).



Flow cytometric analysis of CEM cells using EDNRA Antibody (Center) (green histogram) compared to a negative control cell (blue histogram). FITC-conjugated goat-anti-rabbit secondary antibodies were used for the analysis.