

## Product datasheet for **TA324843**

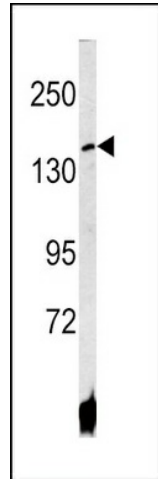
### ATP7B Rabbit Polyclonal Antibody

#### Product data:

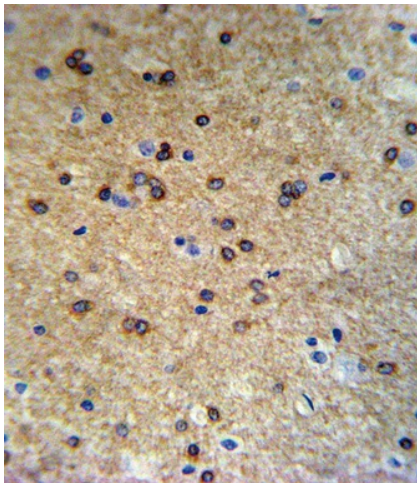
|                         |  |
|-------------------------|--|
| Product Type:           | Primary Antibodies   |
| Applications:           | FC, IF, IHC, WB  |
| Recommended Dilution:   | WB: 1:1000, IHC: 1:10~50, IF: 1:10~50, FC: 1:10~50   |
| Reactivity:             | Human, Mouse   |
| Host:                   | Rabbit   |
| Isotype:                | IgG  |
| Clonality:              | Polyclonal   |
| Immunogen:              | This ATP7B antibody is generated from rabbits immunized with a KLH conjugated synthetic peptide between 1361-1391 amino acids from the C-terminal region of human ATP7B. |
| Formulation:            | Purified polyclonal antibody supplied in PBS with 0.09% (W/V) sodium azide.  |
| Concentration:          | lot specific   |
| Purification:           | This antibody is prepared by Saturated Ammonium Sulfate (SAS) precipitation followed by dialysis against PBS.  |
| Conjugation:            | Unconjugated   |
| Storage:                | Store at -20°C as received.  |
| Stability:              | Stable for 12 months from date of receipt.   |
| Predicted Protein Size: | 157263 Da  |
| Gene Name:              | ATPase copper transporting beta  |
| Database Link:          | <a href="#">NP_000044</a><br><a href="#">Entrez Gene 11979 Mouse</a> <a href="#">Entrez Gene 540 Human</a><br><a href="#">P35670</a>                                     |
| Synonyms:               | PWD; WC1; WD; WND  |
| Protein Families:       | Druggable Genome, Transmembrane  |



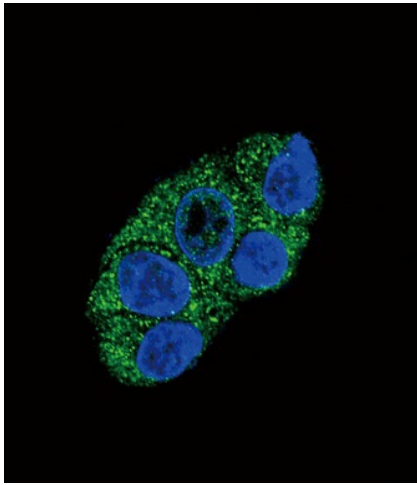
[View online »](#)

**Product images:**

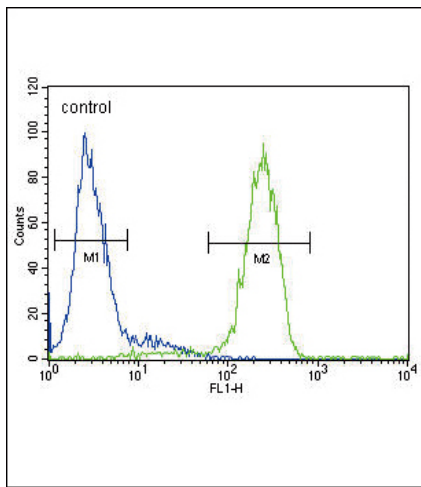
Western blot analysis of ATP7B antibody (C-term) (Cat.# TA324843) in HepG2 cell line lysates (35ug/lane). ATP7B (arrow) was detected using the purified Pab.



ATP7B Antibody (C-term) (Cat.# TA324843) IHC analysis in formalin fixed and paraffin embedded mouse brain tissue followed by peroxidase conjugation of the secondary antibody and DAB staining. This data demonstrates the use of the ATP7B Antibody (C-term) for immunohistochemistry. Clinical relevance has not been evaluated.



Confocal immunofluorescent analysis of ATP7B Antibody (C-term) (Cat#TA324843) with HepG2 cell followed by Alexa Fluor 488-conjugated goat anti-rabbit IgG (green). DAPI was used to stain the cell nuclear (blue).



ATP7B Antibody (C-term) (Cat. #TA324843) flow cytometric analysis of HepG2 cells (right histogram) compared to a negative control cell (left histogram). FITC-conjugated goat-anti-rabbit secondary antibodies were used for the analysis.