

## Product datasheet for **TA324842S**

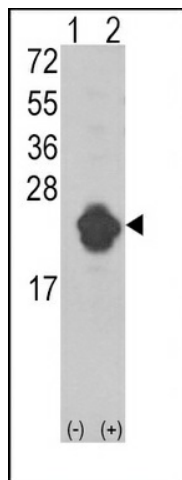
### IL1RA (IL1RN) Rabbit Polyclonal Antibody

#### Product data:

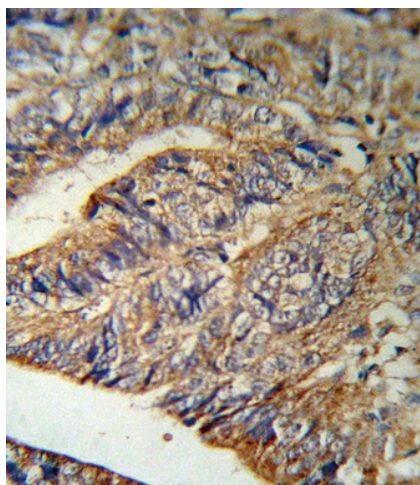
Product Type:	Primary Antibodies
Applications:	FC, IF, IHC, WB
Recommended Dilution:	WB: 1:1000, IHC: 1:10~50, IF: 1:10~50, FC: 1:10~50
Reactivity:	Human
Host:	Rabbit
Isotype:	IgG
Clonality:	Polyclonal
Immunogen:	This IL1RN antibody is generated from rabbits immunized with a KLH conjugated synthetic peptide between 100-129 amino acids from the Central region of human IL1RN.
Formulation:	Purified polyclonal antibody supplied in PBS with 0.09% (W/V) sodium azide.
Concentration:	lot specific
Purification:	This antibody is prepared by Saturated Ammonium Sulfate (SAS) precipitation followed by dialysis against PBS.
Conjugation:	Unconjugated
Storage:	Store at -20°C as received.
Stability:	Stable for 12 months from date of receipt.
Predicted Protein Size:	20055 Da
Gene Name:	interleukin 1 receptor antagonist
Database Link:	<a href="#">NP_000568</a> <a href="#">Entrez Gene 3557 Human</a> <a href="#">P18510</a>
Synonyms:	DIRA; ICIL-1RA; IL-1ra; IL-1ra3; IL-1RN; IL1F3; IL1RA; IRAP; MVCD4
Protein Families:	Druggable Genome, Secreted Protein



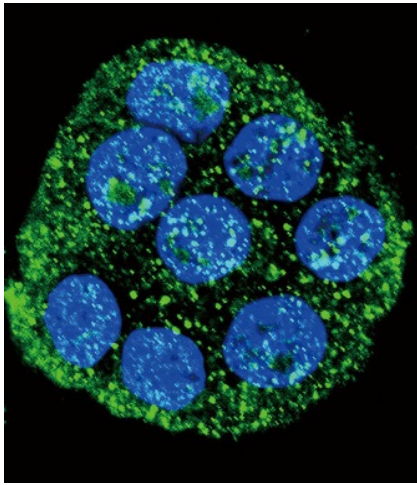
[View online »](#)

**Product images:**

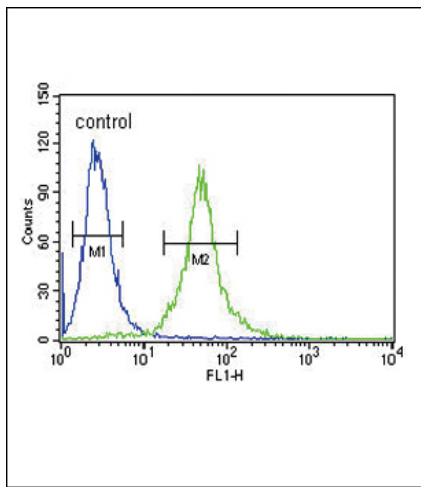
Western blot analysis of IL1RN (arrow) using rabbit polyclonal IL1RN Antibody (Center) (Cat. # [TA324842]). 293 cell lysates (2 ug/lane) either nontransfected (Lane 1) or transiently transfected with the IL1RN gene (Lane 2) (Origene Technologies).



IL1RN Antibody (Center) (RB18901) IHC analysis in formalin fixed and paraffin embedded human Colon carcinoma followed by peroxidase conjugation of the secondary antibody and DAB staining. This data demonstrates the use of the IL1RN Antibody (Center) for immunohistochemistry. Clinical relevance has not been evaluated.



Confocal immunofluorescent analysis of IL1RN Antibody (Center) (Cat#[TA324842]) with WiDr cell followed by Alexa Fluor 488-conjugated goat anti-rabbit IgG (green). DAPI was used to stain the cell nuclear (blue).



IL1RN Antibody (Center) (Cat. #[TA324842]) flow cytometric analysis of 293 cells (right histogram) compared to a negative control cell (left histogram). FITC-conjugated goat-anti-rabbit secondary antibodies were used for the analysis.