

## Product datasheet for **TA324840**

### GPR37 Rabbit Polyclonal Antibody

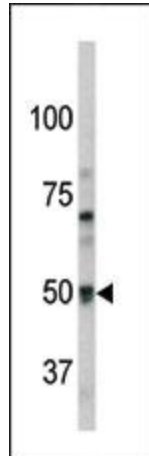
#### Product data:

Product Type:	Primary Antibodies
Applications:	IHC, WB
Recommended Dilution:	WB: 1:1000, IHC: 1:50~100
Reactivity:	Human, Mouse
Host:	Rabbit
Isotype:	IgG
Clonality:	Polyclonal
Immunogen:	This Pael-R (GPR37) antibody is generated from rabbits immunized with a KLH conjugated synthetic peptide between 97-126 amino acids from the N-terminal region of human Pael-R (GPR37).
Formulation:	Purified polyclonal antibody supplied in PBS with 0.09% (W/V) sodium azide.
Concentration:	lot specific
Purification:	This antibody is purified through a protein A column, followed by peptide affinity purification.
Conjugation:	Unconjugated
Storage:	Store at -20°C as received.
Stability:	Stable for 12 months from date of receipt.
Predicted Protein Size:	67114 Da
Gene Name:	G protein-coupled receptor 37
Database Link:	<a href="#">NP_005293</a> <a href="#">Entrez Gene 14763 Mouse</a> <a href="#">Entrez Gene 2861 Human</a> <a href="#">O15354</a>
Synonyms:	EDNRBL; hET(B)R-LP; PAELR
Protein Families:	Druggable Genome, GPCR, Transmembrane
Protein Pathways:	Parkinson's disease

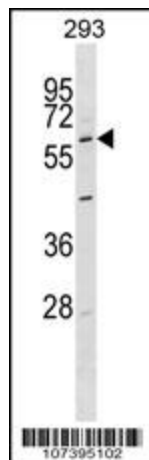


[View online »](#)

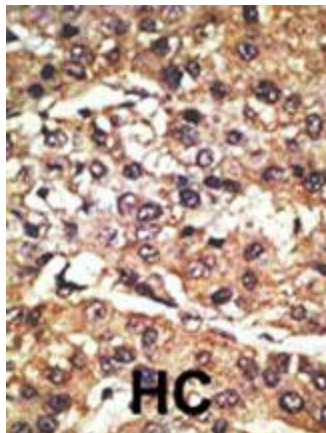
## Product images:



Western blot analysis of anti-Pael-R (GPR37) Pab (Cat. #TA324840) in mouse brain tissue lysate. Pael-R (GPR37) (arrow) was detected using the purified Pab.



Pael Antibody (N-term) (Cat. #TA324840) western blot analysis in 293 cell line lysates (35ug/lane). This demonstrates the Pael antibody detected the Pael protein (arrow).



Formalin-fixed and paraffin-embedded human cancer tissue reacted with the primary antibody, which was peroxidase-conjugated to the secondary antibody, followed by DAB staining. This data demonstrates the use of this antibody for immunohistochemistry; clinical relevance has not been evaluated. BC = breast carcinoma; HC = hepatocarcinoma.