

## Product datasheet for TA324839S

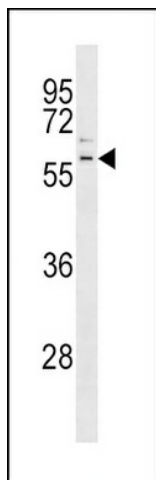
### Parkin (PARK2) Rabbit Polyclonal Antibody

#### Product data:

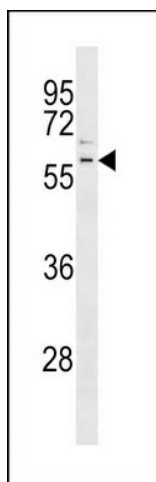
Product Type:	Primary Antibodies
Applications:	FC, IF, IHC, WB
Recommended Dilution:	WB: 1:1000, IF: 1:10~50, FC: 1:10~50, IHC: 1:50~100
Reactivity:	Human, Mouse
Host:	Rabbit
Isotype:	IgG
Clonality:	Polyclonal
Immunogen:	This Parkin antibody is generated from rabbits immunized with a KLH conjugated synthetic peptide between 387-417 amino acids from the C-terminal region of human Parkin.
Formulation:	Purified polyclonal antibody supplied in PBS with 0.09% (W/V) sodium azide.
Concentration:	lot specific
Purification:	This antibody is prepared by Saturated Ammonium Sulfate (SAS) precipitation followed by dialysis against PBS.
Conjugation:	Unconjugated
Storage:	Store at -20°C as received.
Stability:	Stable for 12 months from date of receipt.
Predicted Protein Size:	51641 Da
Gene Name:	parkin RBR E3 ubiquitin protein ligase
Database Link:	<a href="#">NP_004553</a> <a href="#">Entrez Gene 50873 Mouse</a> <a href="#">Entrez Gene 5071 Human</a> <a href="#">O60260</a>
Synonyms:	AR-JP; LPRS2; PDJ; PRKN
Protein Pathways:	Parkinson's disease, Ubiquitin mediated proteolysis


[View online »](#)

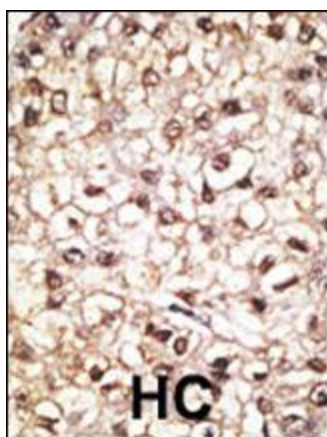
## Product images:



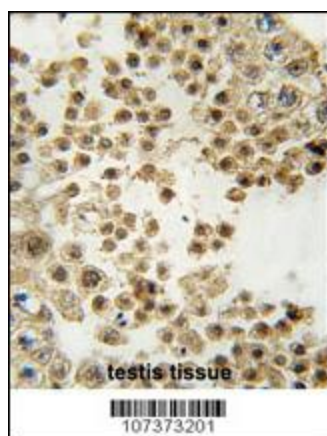
Park2 Antibody (C-term) (Cat. #TA324839) western blot analysis in K562 cell line lysates (35ug/lane). This demonstrates the Park2 antibody detected the Park2 protein (arrow).



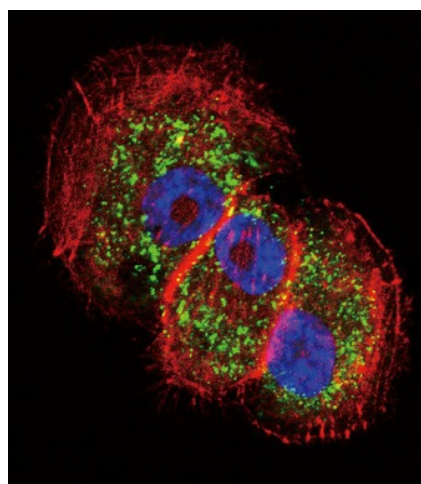
The anti-Parkin (C-term) Pab (Cat. #TA324839) is used in Western blot to detect Parkin in mouse kidney tissue lysate.



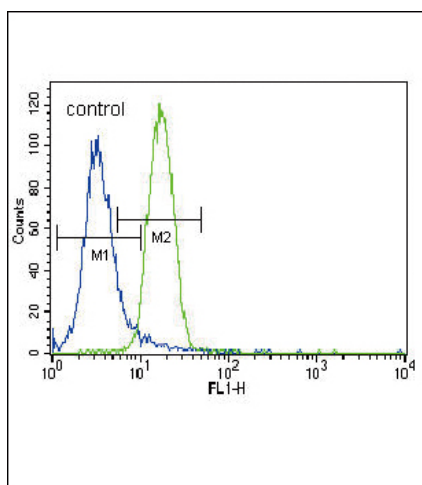
Formalin-fixed and paraffin-embedded human cancer tissue reacted with the primary antibody, which was peroxidase-conjugated to the secondary antibody, followed by AEC staining. This data demonstrates the use of this antibody for immunohistochemistry; clinical relevance has not been evaluated. BC = breast carcinoma; HC = hepatocarcinoma.



Formalin-fixed and paraffin-embedded human testis tissue reacted with PARK2 (Parkin) antibody (C-term) (Cat.#[TA324839]), which was peroxidase-conjugated to the secondary antibody, followed by DAB staining. This data demonstrates the use of this antibody for immunohistochemistry; clinical relevance has not been evaluated.



Confocal immunofluorescent analysis of Parkin Antibody (C-term) (Cat#[TA324839]) with NCI-H460 cell followed by Alexa Fluor 488-conjugated goat anti-rabbit IgG (green). Actin filaments have been labeled with Alexa Fluor 555 phalloidin (red). DAPI was used to stain the cell nuclear (blue).



Parkin Antibody (C-term) (Cat. #TA324839) flow cytometric analysis of NCI-H460 cells (right histogram) compared to a negative control cell (left histogram). FITC-conjugated goat-anti-rabbit secondary antibodies were used for the analysis.