

Product datasheet for **TA324838S**

Parkin (PARK2) Rabbit Polyclonal Antibody

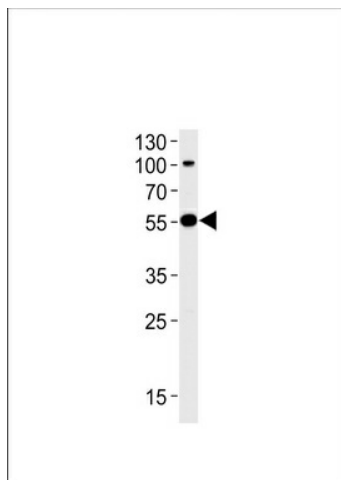
Product data:

Product Type:	Primary Antibodies
Applications:	FC, IF, IHC, WB
Recommended Dilution:	WB: 1:1000, FC: 1:10~50, IF: 1:10~50, IHC: 1:10~50
Reactivity:	Human
Host:	Rabbit
Isotype:	IgG
Clonality:	Polyclonal
Immunogen:	This Parkin antibody is generated from rabbits immunized with a KLH conjugated synthetic peptide between 111-140 amino acids from the N-terminal region of human Parkin.
Formulation:	Purified polyclonal antibody supplied in PBS with 0.09% (W/V) sodium azide.
Concentration:	lot specific
Purification:	This antibody is purified through a protein A column, followed by peptide affinity purification.
Conjugation:	Unconjugated
Storage:	Store at -20°C as received.
Stability:	Stable for 12 months from date of receipt.
Predicted Protein Size:	51641 Da
Gene Name:	parkin RBR E3 ubiquitin protein ligase
Database Link:	NP_004553 Entrez Gene 5071 Human O60260
Synonyms:	AR-JP; LPRS2; PDJ; PRKN
Protein Pathways:	Parkinson's disease, Ubiquitin mediated proteolysis

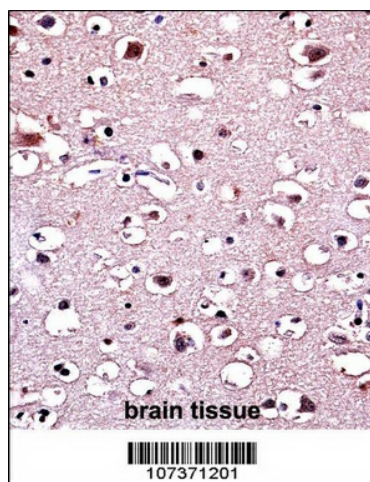


[View online »](#)

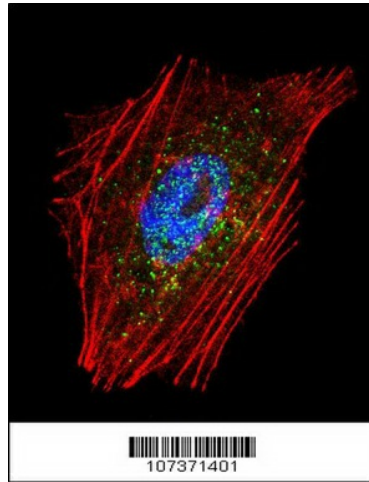
Product images:



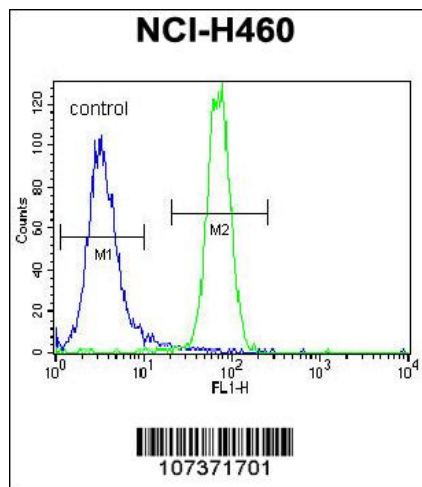
Western blot analysis of lysate from SH-SY5Y cell line, using Park2 Antibody (N-term) (Cat. # [TA324838]). [TA324838] was diluted at 1:1000 at each lane. A goat anti-rabbit (HRP) at 1:5000 dilution was used as the secondary antibody. Lysate at 35ug.



Parkin Antibody (N-term) ([TA324838]) immunohistochemistry analysis in formalin fixed and paraffin embedded human brain tissue followed by peroxidase conjugation of the secondary antibody and DAB staining. This data demonstrates the use of Parkin Antibody (N-term) for immunohistochemistry. Clinical relevance has not been evaluated.



Confocal immunofluorescent analysis of Parkin Antibody (N-term) (Cat#[TA324838]) with NCI-H460 cell followed by Alexa Fluor 488-conjugated goat anti-rabbit IgG (green). Actin filaments have been labeled with Alexa Fluor 555 phalloidin (red). DAPI was used to stain the cell nuclear (blue).



Parkin Antibody (N-term) (Cat. #[TA324838]) flow cytometric analysis of NCI-H460 cells (right histogram) compared to a negative control cell (left histogram). FITC-conjugated goat-anti-rabbit secondary antibodies were used for the analysis.