

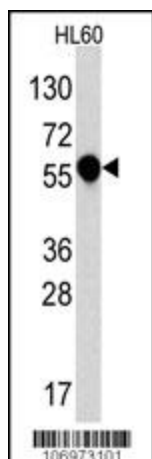
## Product datasheet for **TA324837S**

### IL1 Receptor I (IL1R1) Rabbit Polyclonal Antibody

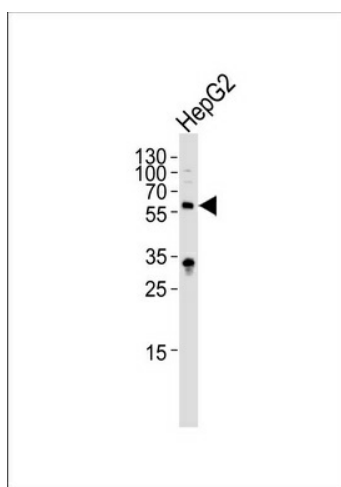
#### Product data:

Product Type:	Primary Antibodies
Applications:	IHC, WB
Recommended Dilution:	WB: 1:1000, IHC: 1:10~50
Reactivity:	Human (Predicted: Rat)
Host:	Rabbit
Isotype:	IgG
Clonality:	Polyclonal
Immunogen:	This IL1R antibody is generated from rabbits immunized with a KLH conjugated synthetic peptide between 474-503 amino acids from the C-terminal region of human IL1R.
Formulation:	Purified polyclonal antibody supplied in PBS with 0.09% (W/V) sodium azide.
Concentration:	lot specific
Purification:	This antibody is purified through a protein A column, followed by peptide affinity purification.
Conjugation:	Unconjugated
Storage:	Store at -20°C as received.
Stability:	Stable for 12 months from date of receipt.
Predicted Protein Size:	65402 Da
Gene Name:	interleukin 1 receptor type 1
Database Link:	<a href="#">NP_000868</a> <a href="#">Entrez Gene 25663 Rat</a> <a href="#">Entrez Gene 3554 Human</a> <a href="#">P14778</a>
Synonyms:	CD121A; D2S1473; IL-1R-alpha; IL1R; IL1RA; P80
Protein Families:	Druggable Genome, Transmembrane
Protein Pathways:	Apoptosis, Cytokine-cytokine receptor interaction, Hematopoietic cell lineage, MAPK signaling pathway

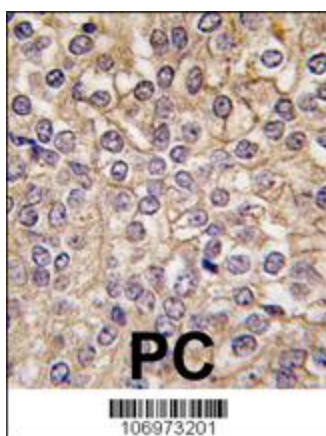

[View online »](#)

**Product images:**


Western blot analysis of anti-IL1R (Cat.# [TA324837]) in HL60 cell line lysates (35ug/lane). IL1R (arrow) was detected using the purified Pab.



Western blot analysis of lysate from HepG2 cell line, using IL1R-pY496 (Cat. # [TA324837]). [TA324837] was diluted at 1:1000. A goat anti-rabbit IgG H&L (HRP) at 1:5000 dilution was used as the secondary antibody. Lysate at 35ug.



Formalin-fixed and paraffin-embedded human prostate carcinoma tissue reacted with IL1R antibody (C-term E487), which was peroxidase-conjugated to the secondary antibody, followed by DAB staining. This data demonstrates the use of this antibody for immunohistochemistry; clinical relevance has not been evaluated.

