

Product datasheet for **TA324836S**

Tuberin (TSC2) Rabbit Polyclonal Antibody

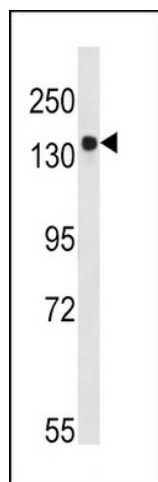
Product data:

| | |
|-------------------------|---|
| Product Type: | Primary Antibodies |
| Applications: | IF, IHC, WB |
| Recommended Dilution: | IF: 1:10~50, WB: 1:1000, IHC: 1:10~50 |
| Reactivity: | Human |
| Host: | Rabbit |
| Isotype: | IgG |
| Clonality: | Polyclonal |
| Immunogen: | This Tuberin (TSC2) antibody is generated from rabbits immunized with a KLH conjugated synthetic peptide between 1776-1805 amino acids from human Tuberin (TSC2). |
| Formulation: | Purified polyclonal antibody supplied in PBS with 0.09% (W/V) sodium azide. |
| Concentration: | lot specific |
| Purification: | This antibody is purified through a protein A column, followed by peptide affinity purification. |
| Conjugation: | Unconjugated |
| Storage: | Store at -20°C as received. |
| Stability: | Stable for 12 months from date of receipt. |
| Predicted Protein Size: | 200608 Da |
| Gene Name: | tuberous sclerosis 2 |
| Database Link: | NP_000539 Entrez Gene 7249 Human P49815 |
| Synonyms: | LAM; PPP1R160; TSC4 |
| Protein Families: | Druggable Genome |
| Protein Pathways: | Insulin signaling pathway, mTOR signaling pathway, p53 signaling pathway |

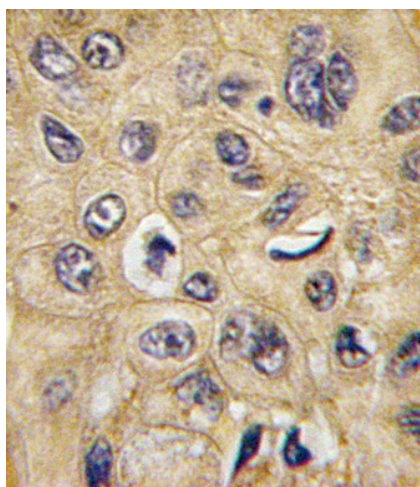


[View online »](#)

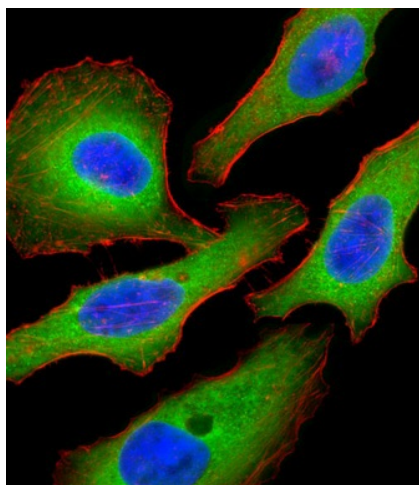
Product images:



Western blot analysis of TSC2-pS1798 (Cat. # [TA324836]) in Ramos cell line lysates (35ug/lane). TSC2 (arrow) was detected using the purified Pab.



Formalin-fixed and paraffin-embedded human hepatocarcinoma tissue reacted with TSC2 Antibody (S1798) (Cat.#[TA324836]), which was peroxidase-conjugated to the secondary antibody, followed by DAB staining. This data demonstrates the use of this antibody for immunohistochemistry; clinical relevance has not been evaluated.



IF image of HeLa cell stained with Tuberin (TSC2) Antibody (S1798) (Cat#[TA324836]). HeLa cells were incubated with Tuberin (TSC2) primary antibody (1:25, 1 h at 37°C). For secondary antibody, Alexa Fluor® 488 conjugated donkey anti-rabbit antibody (green) was used (1:400). Cytoplasmic actin was counterstained with Alexa Fluor® 555 (red) conjugated Phalloidin (7 units/ml). Nuclei were counterstained with DAPI (blue). Tuberin (TSC2) immunoreactivity is localized to Cytoplasm significantly.