

Product datasheet for **TA324836**

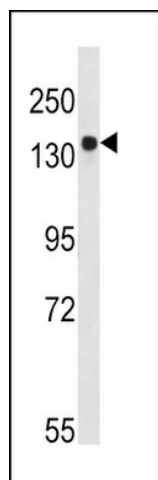
Tuberin (TSC2) Rabbit Polyclonal Antibody

Product data:

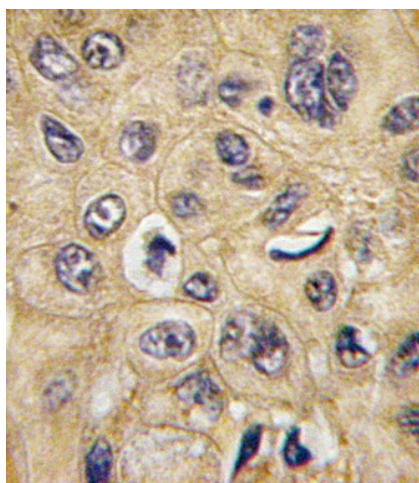
Product Type:	Primary Antibodies
Applications:	IF, IHC, WB
Recommended Dilution:	IF: 1:10~50, WB: 1:1000, IHC: 1:10~50
Reactivity:	Human
Host:	Rabbit
Isotype:	IgG
Clonality:	Polyclonal
Immunogen:	This Tuberin (TSC2) antibody is generated from rabbits immunized with a KLH conjugated synthetic peptide between 1776-1805 amino acids from human Tuberin (TSC2).
Formulation:	Purified polyclonal antibody supplied in PBS with 0.09% (W/V) sodium azide.
Concentration:	lot specific
Purification:	This antibody is purified through a protein A column, followed by peptide affinity purification.
Conjugation:	Unconjugated
Storage:	Store at -20°C as received.
Stability:	Stable for 12 months from date of receipt.
Predicted Protein Size:	200608 Da
Gene Name:	tuberous sclerosis 2
Database Link:	NP_000539 Entrez Gene 7249 Human P49815
Synonyms:	LAM; PPP1R160; TSC4
Protein Families:	Druggable Genome
Protein Pathways:	Insulin signaling pathway, mTOR signaling pathway, p53 signaling pathway



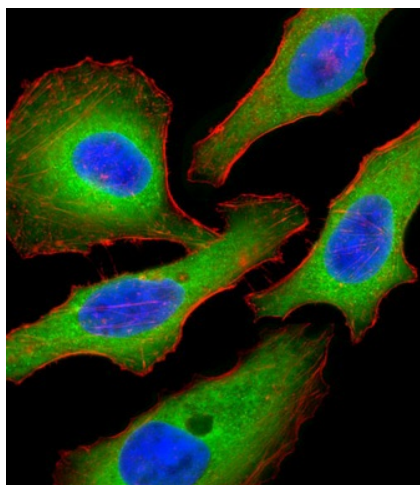
[View online »](#)

Product images:

Western blot analysis of TSC2-pS1798 (Cat. #TA324836) in Ramos cell line lysates (35ug/lane). TSC2 (arrow) was detected using the purified Pab.



Formalin-fixed and paraffin-embedded human hepatocarcinoma tissue reacted with TSC2 Antibody (S1798) (Cat.#TA324836), which was peroxidase-conjugated to the secondary antibody, followed by DAB staining. This data demonstrates the use of this antibody for immunohistochemistry; clinical relevance has not been evaluated.



IF image of HeLa cell stained with Tuberin (TSC2) Antibody (S1798) (Cat#TA324836). HeLa cells were incubated with Tuberin (TSC2) primary antibody (1:25, 1 h at 37°C). For secondary antibody, Alexa Fluor® 488 conjugated donkey anti-rabbit antibody (green) was used (1:400). Cytoplasmic actin was counterstained with Alexa Fluor® 555 (red) conjugated Phalloidin (7 units/ml). Nuclei were counterstained with DAPI (blue). Tuberin (TSC2) immunoreactivity is localized to Cytoplasm significantly.