

## Product datasheet for **TA324835S**

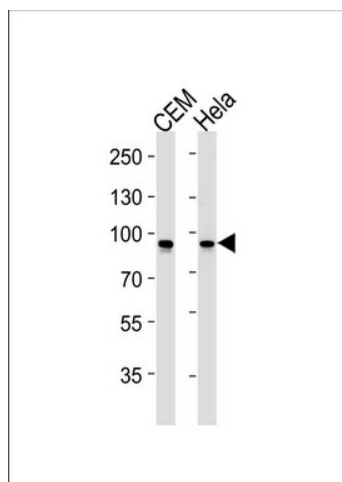
### STAT1 Mouse Monoclonal Antibody [Clone ID: 1141CT26.2.1]

#### Product data:

Product Type:	Primary Antibodies
Clone Name:	1141CT26.2.1
Applications:	WB
Recommended Dilution:	WB: 1:1000
Reactivity:	Human
Host:	Mouse
Isotype:	IgG1
Clonality:	Monoclonal
Immunogen:	Purified His-tagged STAT1 protein was used to produced this monoclonal antibody.
Formulation:	Purified monoclonal antibody supplied in PBS with 0.09% (W/V) sodium azide.
Concentration:	lot specific
Purification:	This antibody is purified through a protein G column, followed by dialysis against PBS.
Conjugation:	Unconjugated
Storage:	Store at -20°C as received.
Stability:	Stable for 12 months from date of receipt.
Predicted Protein Size:	87335 Da
Gene Name:	signal transducer and activator of transcription 1
Database Link:	<a href="#">NP_009330</a> <a href="#">Entrez Gene 6772 Human</a> <a href="#">P42224</a>
Synonyms:	CANDF7; IMD31A; IMD31B; IMD31C; ISGF-3; STAT91
Protein Families:	Druggable Genome, Transcription Factors
Protein Pathways:	Chemokine signaling pathway, Jak-STAT signaling pathway, Pancreatic cancer, Pathways in cancer, Toll-like receptor signaling pathway



[View online »](#)

**Product images:**


STAT1 Antibody (Cat. #TA324835) western blot analysis in CEM, HeLa cell line lysates (35ug/lane). This demonstrates the STAT1 antibody detected the STAT1 protein (arrow).