

## Product datasheet for **TA324834**

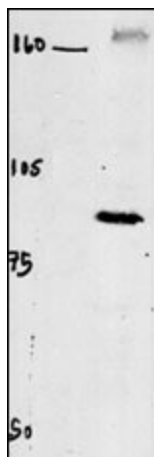
### CLCN4 Rabbit Polyclonal Antibody

#### Product data:

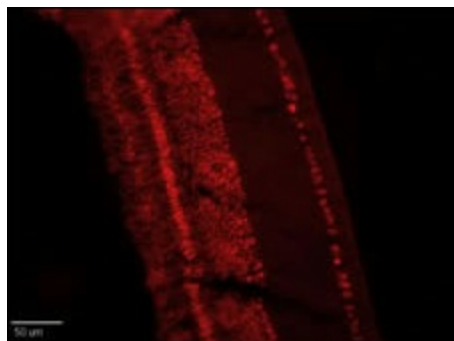
Product Type:	Primary Antibodies
Applications:	IF, IHC, WB
Recommended Dilution:	WB: 1:1000, IF: 1:10~50, IHC: 1:10~50
Reactivity:	Human (Predicted: Mouse, Rat)
Host:	Rabbit
Isotype:	IgG
Clonality:	Polyclonal
Immunogen:	This CLC4 antibody is generated from rabbits immunized with a KLH conjugated synthetic peptide between 663-689 amino acids from the C-terminal region of human CLC4.
Formulation:	Purified polyclonal antibody supplied in PBS with 0.09% (W/V) sodium azide.
Concentration:	lot specific
Purification:	This antibody is prepared by Saturated Ammonium Sulfate (SAS) precipitation followed by dialysis against PBS.
Conjugation:	Unconjugated
Storage:	Store at -20°C as received.
Stability:	Stable for 12 months from date of receipt.
Predicted Protein Size:	84917 Da
Gene Name:	chloride voltage-gated channel 4
Database Link:	<a href="#">NP_001821</a> <a href="#">Entrez Gene 12727 Mouse</a> <a href="#">Entrez Gene 60586 Rat</a> <a href="#">Entrez Gene 1183 Human</a> <a href="#">P51793</a>
Synonyms:	CIC-4; CIC-4A; CLC4
Protein Families:	Druggable Genome, Ion Channels: Other, Transmembrane



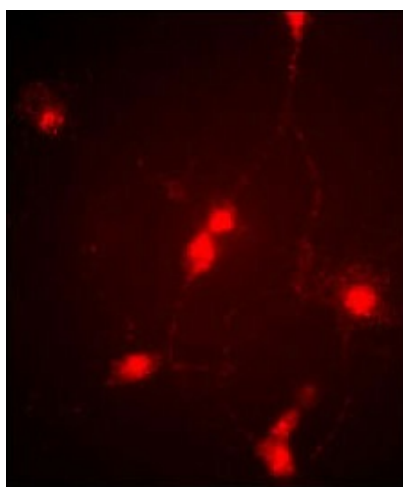
[View online »](#)

**Product images:**

Western blot of chicken brain tissue incubated with CLC4 Antibody (C-term) (Cat.# TA324834). Data courtesy of Emily McMains, Louisiana State University.



Retinae were collected from adult White Leghorn chicken were incubated at RT with 1:250 (1%BSA/.1% saponin PBS) CLC4 antibody (Cat.# TA324834) for 1 hour. Sections were then washed in PBS (3X10minutes) and then treated with secondary antibody (1:500 Cy3) for one hour. After another PBS wash series, sections were coverslipped and antibody labeling was visualized at 20X with a Leica upright microscope using a TRITC filter set and Xenon lamp illumination. (Crousillac et al, 2003)



Immunofluorescence image of cultured chick retinal amacrine (neuronal) cells labeled with CLC4 Antibody (C-term) (TA324834). Data courtesy of Emily McMains, Louisiana State University.