

Product datasheet for TA324832S

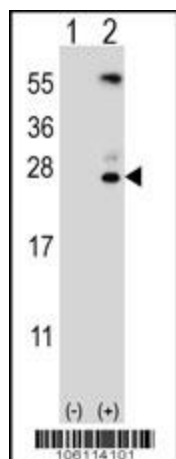
Kallikrein 6 (KLK6) Rabbit Polyclonal Antibody

Product data:

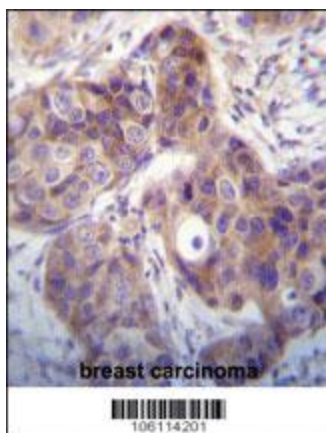
Product Type:	Primary Antibodies
Applications:	FC, IHC, WB
Recommended Dilution:	WB: 1:1000, IHC: 1:10~50, FC: 1:10~50
Reactivity:	Human
Host:	Rabbit
Isotype:	IgG
Clonality:	Polyclonal
Immunogen:	This Kallikrein 6 antibody is generated from rabbits immunized with a KLH conjugated synthetic peptide between 1-30 amino acids from the N-terminal region of human Kallikrein 6.
Formulation:	Purified polyclonal antibody supplied in PBS with 0.09% (W/V) sodium azide.
Concentration:	lot specific
Purification:	This antibody is prepared by Saturated Ammonium Sulfate (SAS) precipitation followed by dialysis against PBS.
Conjugation:	Unconjugated
Storage:	Store at -20°C as received.
Stability:	Stable for 12 months from date of receipt.
Predicted Protein Size:	26856 Da
Gene Name:	kallikrein related peptidase 6
Database Link:	NP_001012982 Entrez Gene 5653 Human Q92876
Synonyms:	Bssp; hK6; Klk7; PRSS9; PRSS18; SP59
Protein Families:	Druggable Genome, Protease, Secreted Protein


[View online »](#)

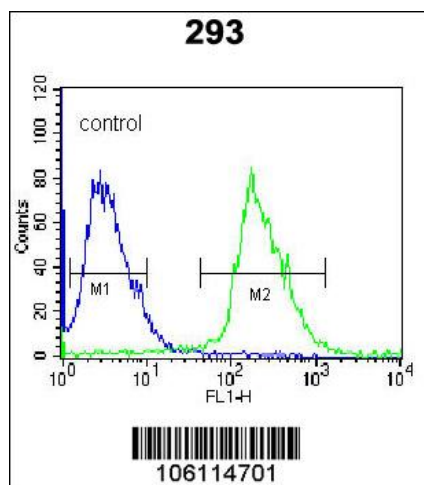
Product images:



Western blot analysis of KLK6 (arrow) using rabbit polyclonal KLK6 Antibody (A13) (Cat. # [TA324832]). 293 cell lysates (2 ug/lane) either nontransfected (Lane 1) or transiently transfected (Lane 2) with the KLK6 gene.



Kallikrein 6 (KLK6) Antibody (N-term) (Cat. # [TA324832]) immunohistochemistry analysis in formalin fixed and paraffin embedded human breast carcinoma followed by peroxidase conjugation of the secondary antibody and DAB staining. This data demonstrates the use of Kallikrein 6 (KLK6) Antibody (N-term) for immunohistochemistry. Clinical relevance has not been evaluated.



Kallikrein 6 (KLK6) Antibody (N-term) (Cat. # [TA324832]) flow cytometric analysis of 293 cells (right histogram) compared to a negative control cell (left histogram). FITC-conjugated goat-anti-rabbit secondary antibodies were used for the analysis.