

Product datasheet for **TA324830S**

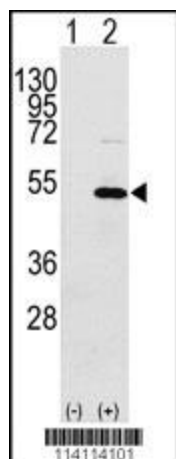
YB1 (YBX1) Rabbit Polyclonal Antibody

Product data:

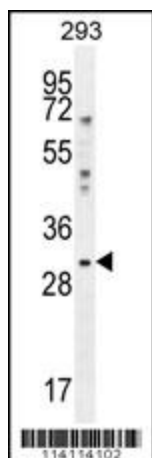
Product Type:	Primary Antibodies
Applications:	IF, WB
Recommended Dilution:	WB: 1:1000, IF: 1:10~50
Reactivity:	Human (Predicted: Mouse, Rat, Bovine, Xenopus)
Host:	Rabbit
Isotype:	IgG
Clonality:	Polyclonal
Immunogen:	This YBX1 antibody is generated from rabbits immunized with a KLH conjugated synthetic peptide between 276-305 amino acids from the C-terminal region of human YBX1.
Formulation:	Purified polyclonal antibody supplied in PBS with 0.09% (W/V) sodium azide.
Concentration:	lot specific
Purification:	This antibody is prepared by Saturated Ammonium Sulfate (SAS) precipitation followed by dialysis against PBS.
Conjugation:	Unconjugated
Storage:	Store at -20°C as received.
Stability:	Stable for 12 months from date of receipt.
Predicted Protein Size:	35924 Da
Gene Name:	Y-box binding protein 1
Database Link:	NP_004550 Entrez Gene 22608 Mouse Entrez Gene 500538 Rat Entrez Gene 4904 Human P67809
Synonyms:	BP-8; CSDA2; CSDB; DBPB; MDR-NF1; NSEP-1; NSEP1; YB-1; YB1
Protein Families:	ES Cell Differentiation/IPS, Transcription Factors


[View online »](#)

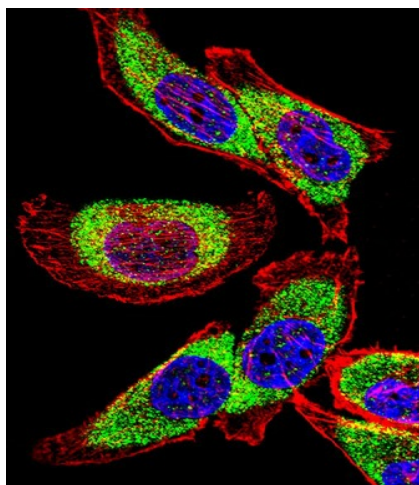
Product images:



Western blot analysis of YBX1 (arrow) using rabbit polyclonal YBX1 Antibody (C-term) (Cat. # [TA324830]). 293 cell lysates (2 ug/lane) either nontransfected (Lane 1) or transiently transfected with the YBX1 gene (Lane 2) (Origene Technologies).



YBX1 Antibody (C-term) (Cat. # [TA324830]) western blot analysis in 293 cell line lysates (35ug/lane). This demonstrates the YBX1 antibody detected the YBX1 protein (arrow).



IF image of U251 cell stained with YBX1 Antibody (C-term) (Cat#[TA324830]). U251 cells were incubated with YBX1 primary antibody (1:25, 1 h at 37°C). For secondary antibody, Alexa Fluor® 488 conjugated donkey anti-rabbit antibody (green) was used (1:400). Cytoplasmic actin was counterstained with Alexa Fluor® 555 (red) conjugated Phalloidin (7 units/ml). Nuclei were counterstained with DAPI (blue). YBX1 immunoreactivity is localized to Cytoplasm significantly.