

## Product datasheet for **TA324830**

### **YB1 (YBX1) Rabbit Polyclonal Antibody**

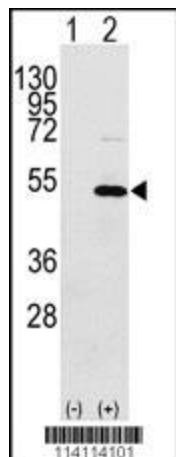
#### **Product data:**

<b>Product Type:</b>	Primary Antibodies
<b>Applications:</b>	IF, WB
<b>Recommended Dilution:</b>	WB: 1:1000, IF: 1:10~50
<b>Reactivity:</b>	Human (Predicted: Mouse, Rat, Bovine, Xenopus)
<b>Host:</b>	Rabbit
<b>Isotype:</b>	IgG
<b>Clonality:</b>	Polyclonal
<b>Immunogen:</b>	This YBX1 antibody is generated from rabbits immunized with a KLH conjugated synthetic peptide between 276-305 amino acids from the C-terminal region of human YBX1.
<b>Formulation:</b>	Purified polyclonal antibody supplied in PBS with 0.09% (W/V) sodium azide.
<b>Concentration:</b>	lot specific
<b>Purification:</b>	This antibody is prepared by Saturated Ammonium Sulfate (SAS) precipitation followed by dialysis against PBS.
<b>Conjugation:</b>	Unconjugated
<b>Storage:</b>	Store at -20°C as received.
<b>Stability:</b>	Stable for 12 months from date of receipt.
<b>Predicted Protein Size:</b>	35924 Da
<b>Gene Name:</b>	Y-box binding protein 1
<b>Database Link:</b>	<a href="#">NP_004550</a> <a href="#">Entrez Gene 22608 Mouse</a> <a href="#">Entrez Gene 500538 Rat</a> <a href="#">Entrez Gene 4904 Human</a> <a href="#">P67809</a>
<b>Synonyms:</b>	BP-8; CSDA2; CSDB; DBPB; MDR-NF1; NSEP-1; NSEP1; YB-1; YB1
<b>Protein Families:</b>	ES Cell Differentiation/IPS, Transcription Factors

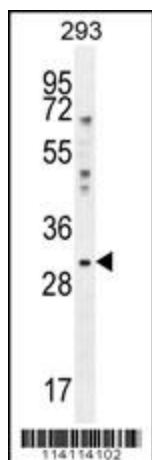


[View online »](#)

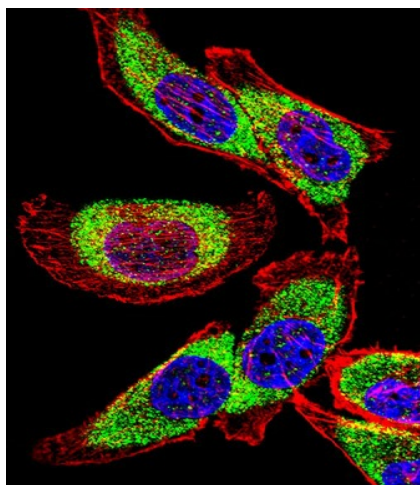
## Product images:



Western blot analysis of YBX1 (arrow) using rabbit polyclonal YBX1 Antibody (C-term) (Cat. #TA324830). 293 cell lysates (2 ug/lane) either nontransfected (Lane 1) or transiently transfected with the YBX1 gene (Lane 2) (Origene Technologies).



YBX1 Antibody (C-term) (Cat. #TA324830) western blot analysis in 293 cell line lysates (35ug/lane). This demonstrates the YBX1 antibody detected the YBX1 protein (arrow).



IF image of U251 cell stained with YBX1 Antibody (C-term) (Cat#TA324830).U251 cells were incubated with YBX1 primary antibody (1:25, 1 h at 37°C). For secondary antibody, Alexa Fluor® 488 conjugated donkey anti-rabbit antibody (green) was used (1:400).Cytoplasmic actin was counterstained with Alexa Fluor® 555 (red) conjugated Phalloidin (7 units/ml). Nuclei were counterstained with DAPI (blue). YBX1 immunoreactivity is localized to Cytoplasm significantly.